

# Photographing Moving Water:

Considerations for Impactful Images

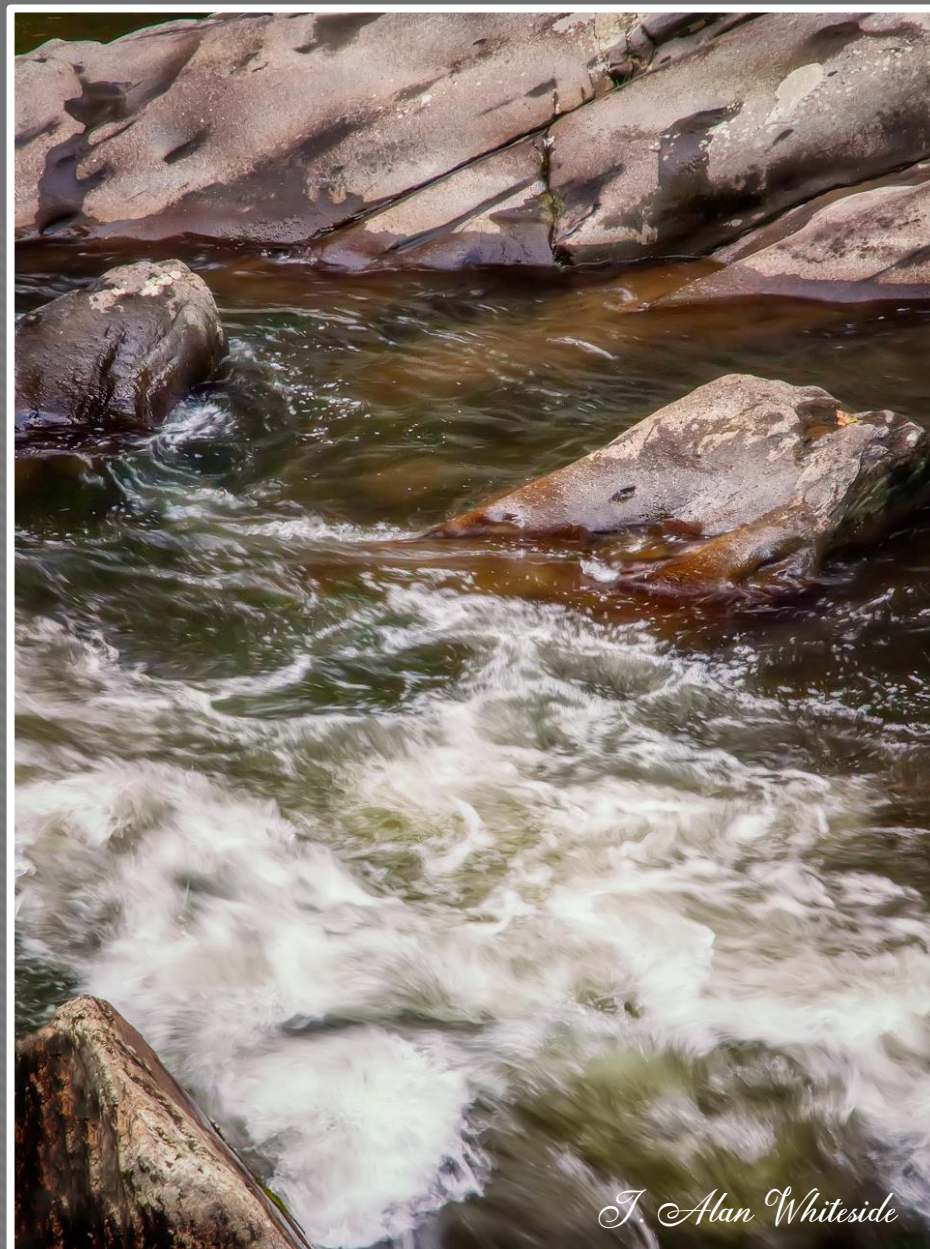
Session 1 (Participant)

*© 2021 J. Alan Whiteside*

**Goal:**

**Understand the impact of individual and combined factors affecting images of moving water (and similar subjects)**

# Introduction



*J. Alan Whiteside*





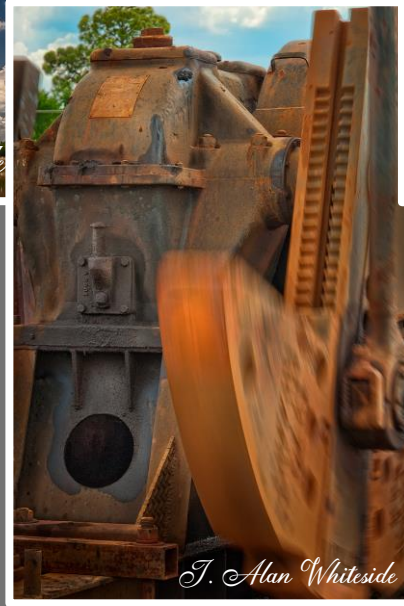




*J. Alan Whiteside*



*J. Alan Whiteside*



*J. Alan Whiteside*



*J. Alan Whiteside*

# Considerations for Photographing Moving Water

- Safety
- Your Intent
- Shutter Speed
- Amount of Movement (flow/volume)
- Aperture (f-stop) and ISO
- Neutral Density Filters
- Direction of Movement
- Depth of Field
- Composition



# Safety





# Safety

## Your Personal Safety

- Slippery ground
- Uneven surfaces
- Heights

## Camera Safety

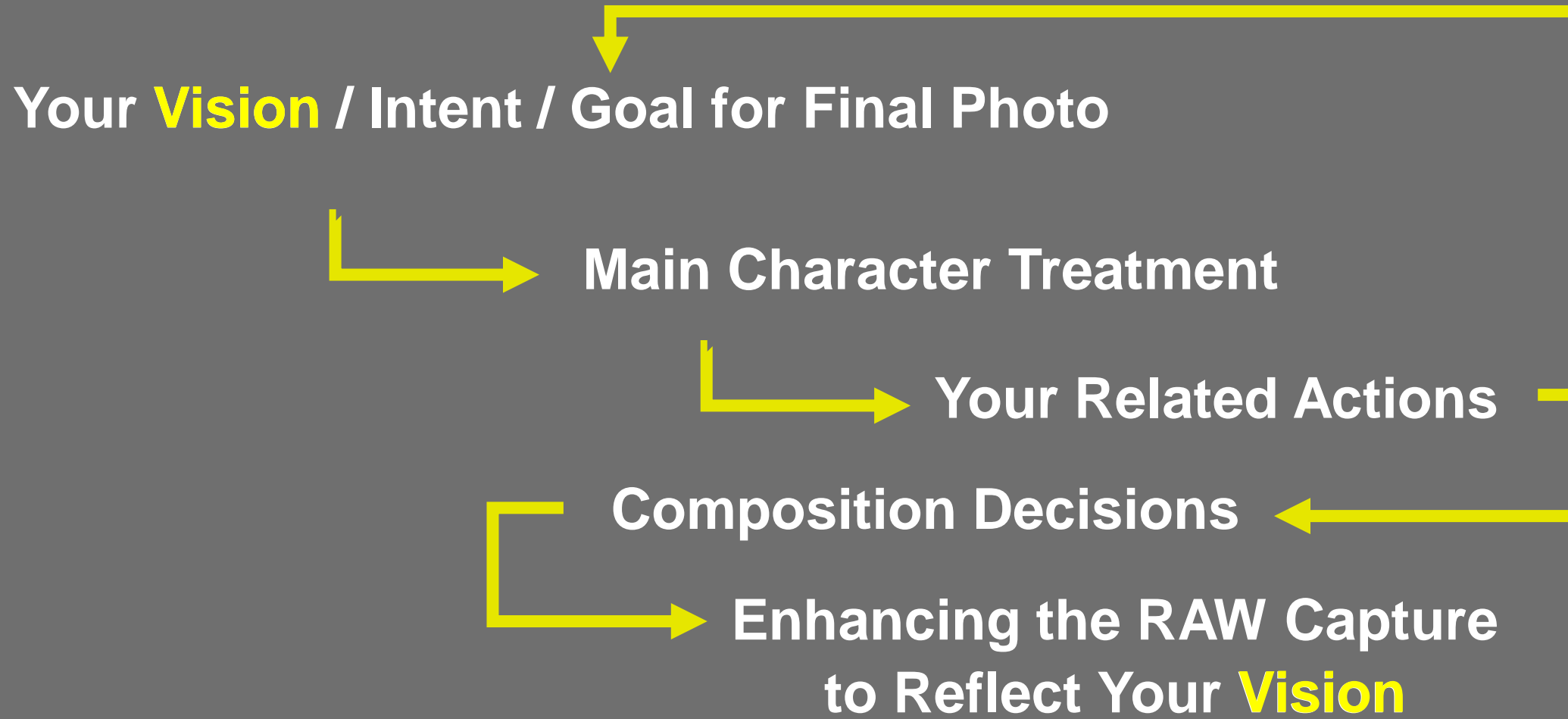
- Unlevel tripod
- Water action



# Your Intent



# From Your Vision to Final Photo



# What's Your Intent?

Make conscious choices about  
factors you can control.





# Achieving Your Intent with Moving Water

Success = **Controlling / Manipulating** Water

↳ To control water, **control the light**

↳ To control the light, **control camera settings**

↳ Result: Water will have **CHARACTER**

# Main or Supporting Character?



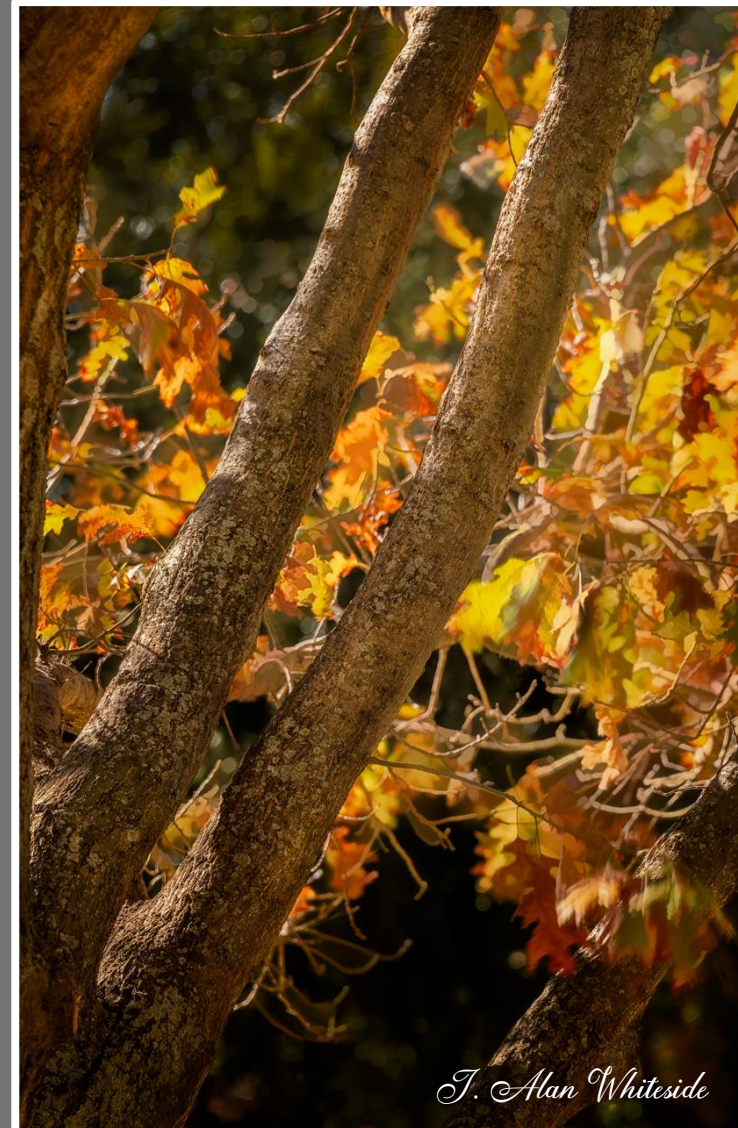


# Realistic or Impressionist Intent?





# Realistic or Impressionist Intent?





# Realistic or Impressionist Intent?



# Realistic or Impressionist Intent?



*J. Alan Whiteside*



# Shutter Speed

# Exposure Triangle













# Shutter Speed Comparison



- Order your sequence of shots in Lightroom by shutter speed

# Fast Shutter Speed Example



1/160<sup>th</sup> sec

f/6.3

ISO 6400

*J. Alan Whiteside*



# Amount of Movement

# Amount of Water Movement Impact



8 sec

*f*/16

ISO 100

*J. Alan Whiteside*



# Amount of Water Movement Impact



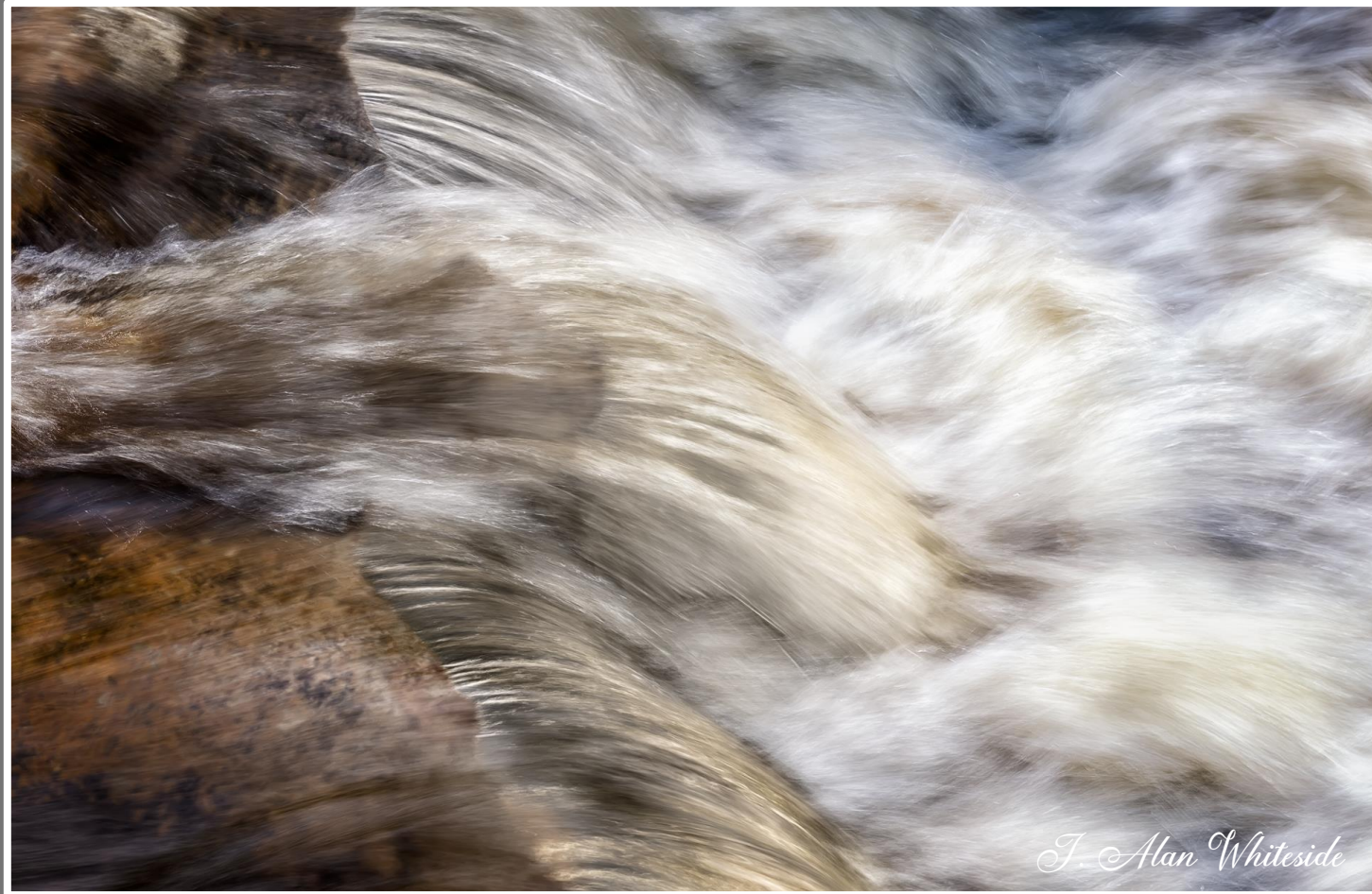
1/8 sec (0.13 sec)



0.4 sec



# Amount of Water Movement Impact



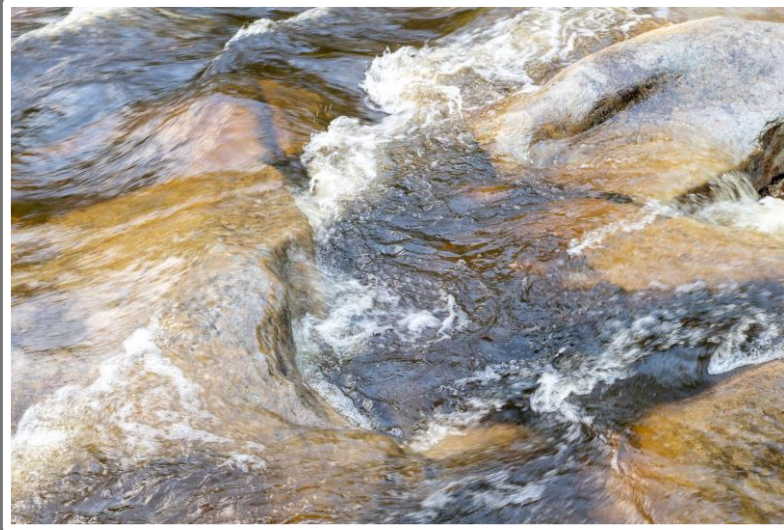
1/15 sec



# “Less / Slower” Water Movement



1/25 sec



1/50 sec



*J. Alan Whiteside*

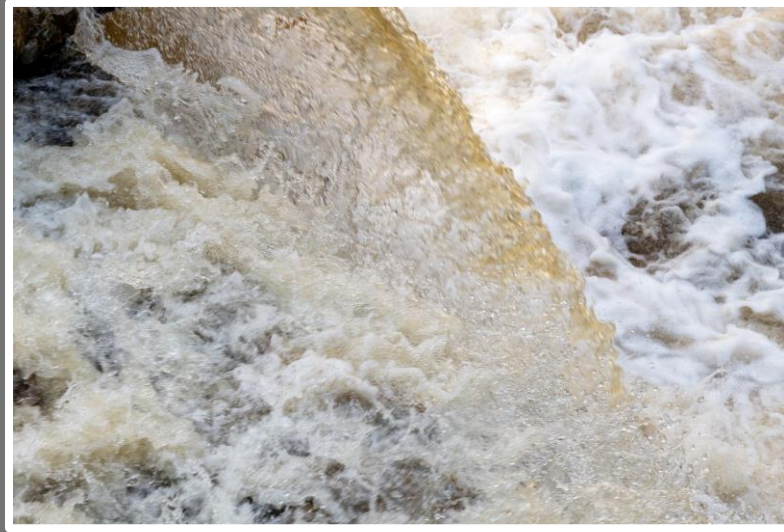
1/100 sec



# “More / Faster” Water Movement



1/125 sec



1/250 sec



1/500 sec

*J. Alan Whiteside*



# Amount of Movement Impact



Both  
images  
shot at  
1/15<sup>th</sup> sec



# Amount of Water Movement Impact





# Considerations for Photographing Moving Water

- ★ • Safety
- ★ • Your Intent
- ★ • Shutter Speed
- ★ • Amount of Movement (flow/volume)
  - Aperture (f-stop) and ISO
  - Neutral Density Filters
  - Direction of Movement
  - Depth of Field
  - Composition