

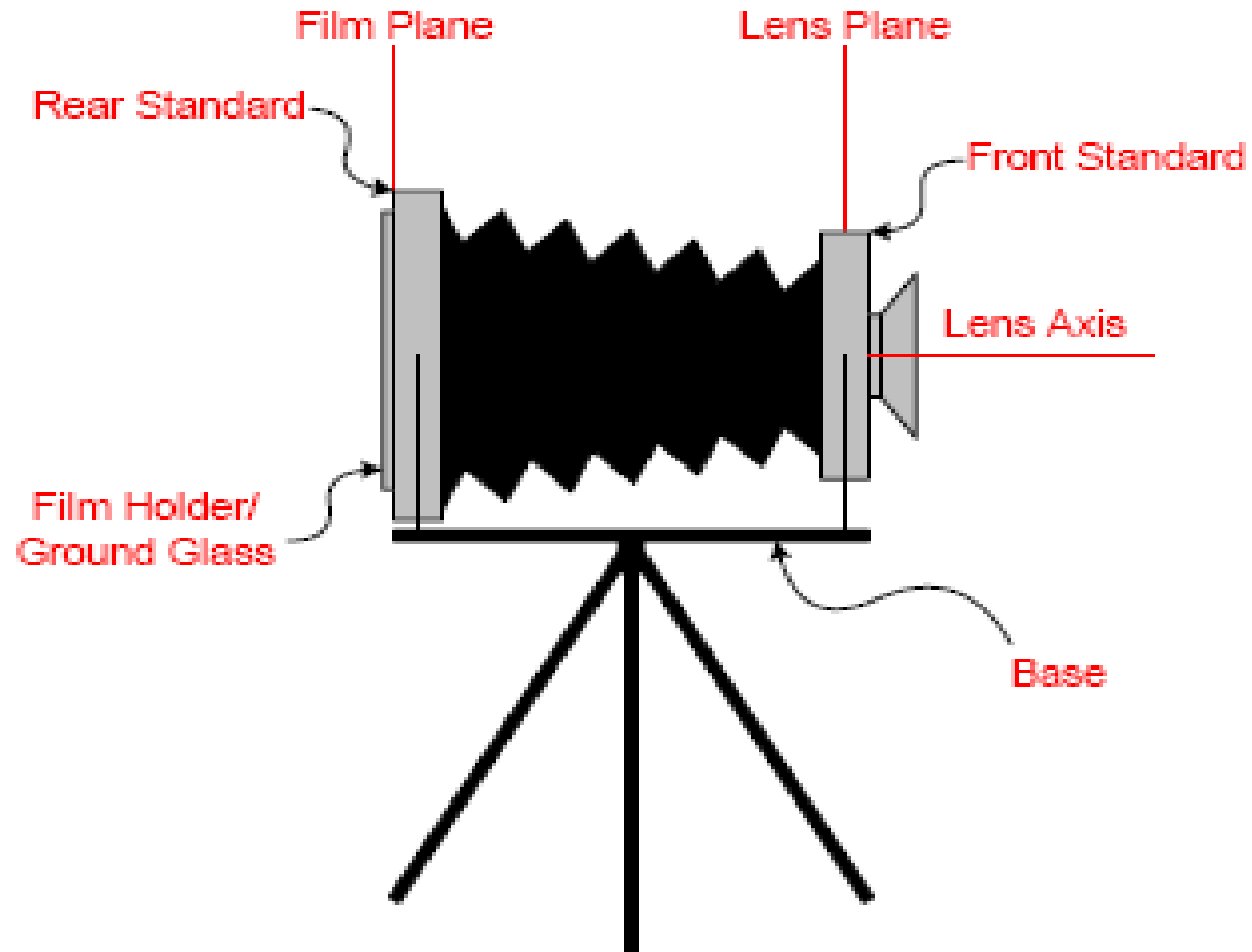
Large Format Photography

Large Format camera types & theory

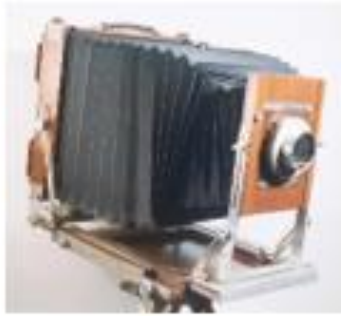
Differences as compared to hand-held digital, medium format and 35mm cameras:

- . Previsualization vs. Post Visualization;
- . Image quality; sharpness & grayscale;
- . Flexibility in controlling the plane of critical focus;
- . Achieving perspective alterations in-camera;
- . Depth of field & depth of focus;
- . Control of composition, perspective;
- . The focusing and exposure process;
- . Size, weight & mobility;
- . Cost of equipment & supplies.

Parts of a Large Format Camera:



Types of large format Cameras:



“Technical” and “Field” view cameras are flexible and transportable cameras with movements.



A Press Camera is an easy to use camera that is rugged and suitable for hand held use with limited or no movements.

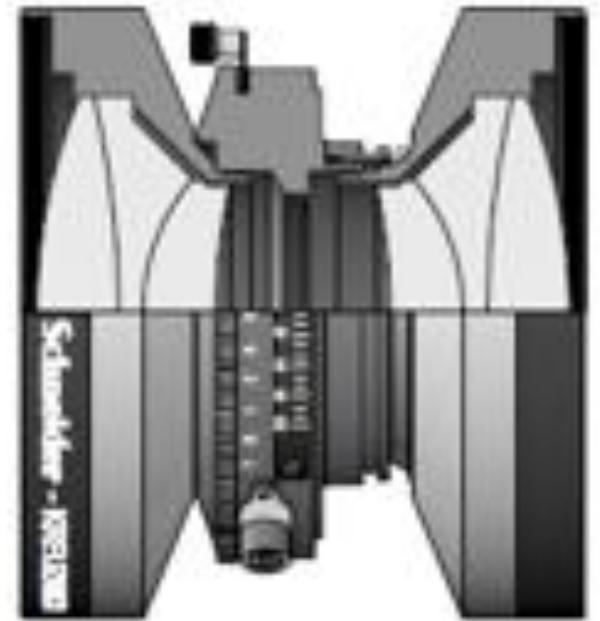
Types of large format Cameras (continued):



Monorail view cameras are used primarily in studio applications having the greatest precision and flexibility in movements.

Lenses

- **A large format camera lens consists of:**
 - Lens cells
 - A shutter
 - An aperture diaphragm
 - A lens board;



Lenses

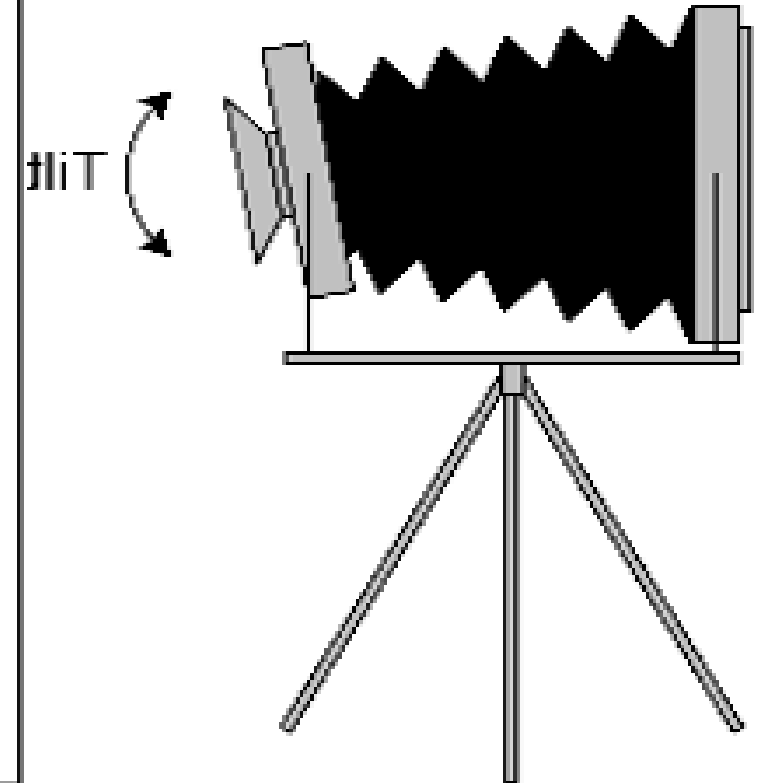
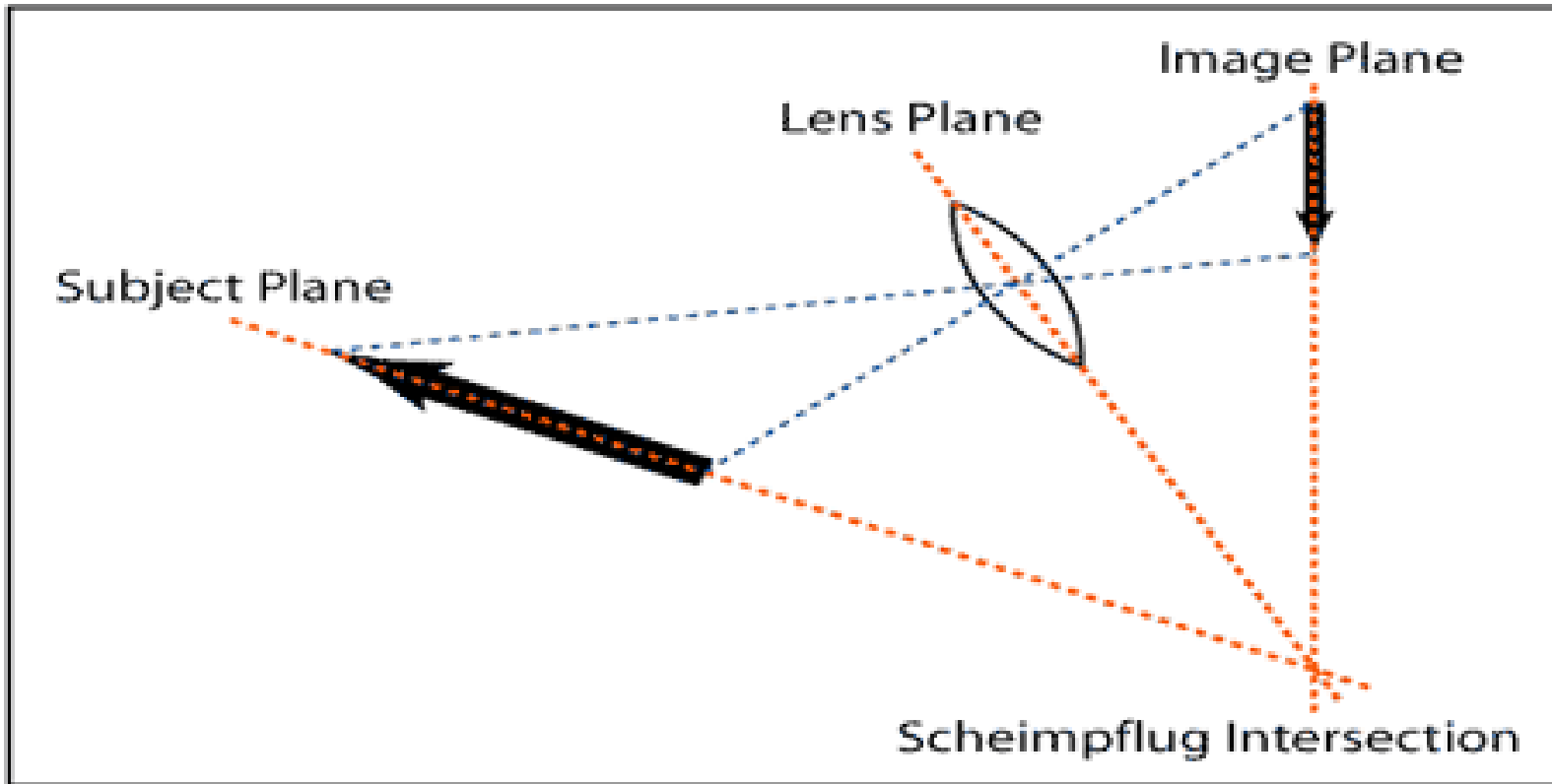
- Below is a camera field of view comparison chart for various film formats:

Focal Length of lenses Comparison By Format Width (mm) W/ Area & Aspect Ratio

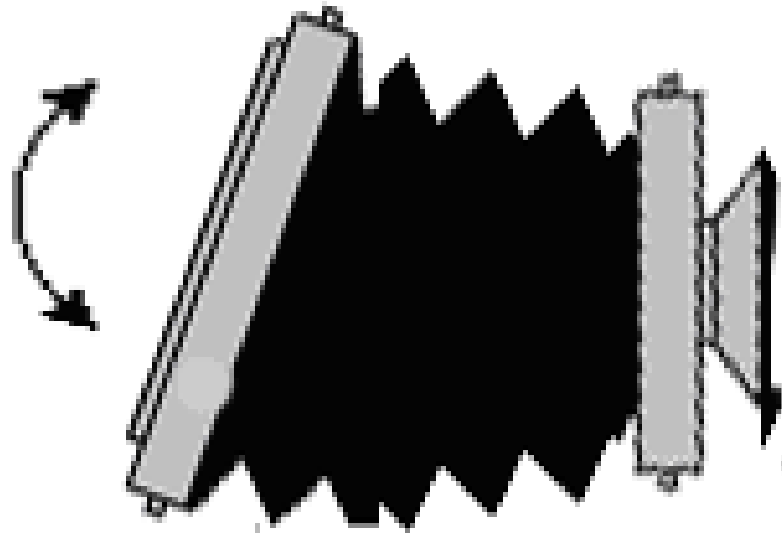
Digital Formats									35mm	120 Roll - Medium Formats						Sheet Film Formats			
1/2.5	1/1.8	1/1.7	Nikon 1/CX	Four Thirds	Foveon	APS-C (Canon)	APS-C (Nikon)	APS-H	35mm	4.5x6cm	6x6cm	6x7cm	6x8cm	6x9cm	6x12cm	4x5"	5x7"	8X10"	11X14"
.25cm2	.38cm2	.38cm2	1.2cm2	2.3cm2	2.9cm2	3.3cm2	3.7cm2	5.5cm2	8.6cm	27cm2	36cm2	42cm2	48cm2	54cm2	72cm2	130cm2	226cm2	516cm2	993cm2
1.34:1	1.35:1	1.18:1	1.5:1	1.33:1	1.5:1	1.5:1	1.5:1	1.51:1	1.5:1	1.33:1	1:1	1.17:1	1.33:1	1.5:1	2:1	1.25:1	1.4:1	1.25:1	1.28:1
1.3	1.6	1.5	2.9	3.8	4.6	4.9	5.2	6.4	8.0	13	13	16	18	20	27	28	40	56	79
1.9	2.4	2.2	4.4	5.8	6.9	7.4	7.9	10	12	20	20	23	27	30	40	42	59	85	119
2.4	3.0	2.8	5.5	7.2	8.6	9.3	10	12	15	25	25	29	33	38	50	53	74	106	148
2.9	3.6	3.4	6.6	8.7	10	11	12	14	18	30	30	35	40	45	60	64	89	127	178
3.4	4.2	3.9	7.7	10	12	13	14	17	21	35	35	41	47	53	70	74	104	148	208
3.8	4.8	4.5	8.8	12	14	15	16	19	24	40	40	47	53	60	80	85	119	169	237
4.5	5.6	5.2	10	13	16	17	18	22	28	47	47	54	62	70	93	99	138	198	277
5.6	7.0	6.5	13	17	20	22	23	28	35	58	58	68	78	88	117	123	173	247	346
7.2	9.0	8.4	17	22	26	28	30	36	45	75	75	88	100	113	150	159	223	318	445
8.0	10	9	18	24	29	31	33	40	50	83	83	97	111	125	167	176	247	353	494
8.8	11	10	20	26	32	34	36	44	55	92	92	107	122	138	183	194	272	388	544
12	15	14	28	36	43	46	49	60	75	125	125	146	167	188	250	265	371	529	742
14	17	16	31	41	49	52	56	68	85	142	142	165	189	213	283	300	420	600	841
14	18	17	33	43	52	56	59	72	90	150	150	175	200	225	300	318	445	635	890
17	21	20	39	50	60	65	69	84	105	175	175	204	233	263	350	370	519	741	1038
19	24	22	44	58	69	74	79	96	120	200	200	233	267	300	400	423	593	847	1187
22	27	25	50	65	78	83	89	108	135	225	225	263	300	338	450	476	668	953	1335
29	36	34	66	87	104	111	118	144	180	300	300	350	400	450	600	635	890	1270	1780
32	40	37	73	96	115	123	131	159	200	333	333	389	444	500	667	706	989	1411	1978

Movements

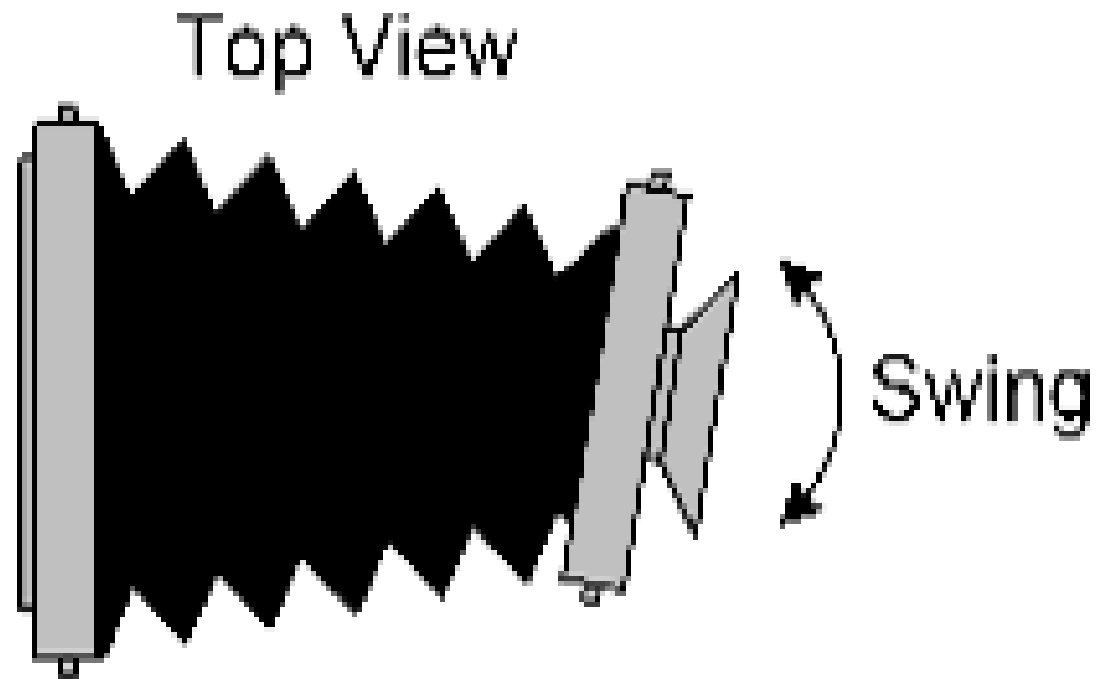
- Illustrations of a lens tilt movement:



Movements



A Back (film) Tilt/Swing



A Front (lens) Swing

Using A Light Meter

0	I	II	III	IV	V	VI	VII	VIII	IX	X
Max Black	Near Black	Textured Black	Darkest full detail	Dark Gray	Middle Gray	Light Gray	Lightest Full Detail	Textured white	Near White	Max White
			Close 2 Stops	Close 1 Stop		Open 1 Stop	Open 2 Stops			

Exposure taking sequence

LF Picture Taking Quick Reference Guide

- **Level camera, set and lock tripod and camera adjustments at level square and neutral;**
- **Open shutter, rough focus, view scene on screen, use movements if desired and lock;**
- **Critical focus wide open;**
- **Determine Exposure**
- **Final focus at working aperture, several points on screen;**
- **Close shutter, set shutter speed, cock the shutter;**
- **Dust -off film holder;**
- **Insert the film holder whites tab facing lens, verify fully seated;**
- **Pull dark-slide facing lens strait out;**
- **Allow camera shake to settle and trip shutter;**
- **Replace dark-slide with black tab facing lens;**
- **Remove film holder, place in shaded storage;**
- **Open shutter, verify focus and framing.**

Additional information can be found at:

<https://andysphotofilmresource.blogspot.com/>