

Masking in Lightroom Classic 2022

Local Adjustment Get a Makeover

Dennis Fritsche

DCC/PPC Training

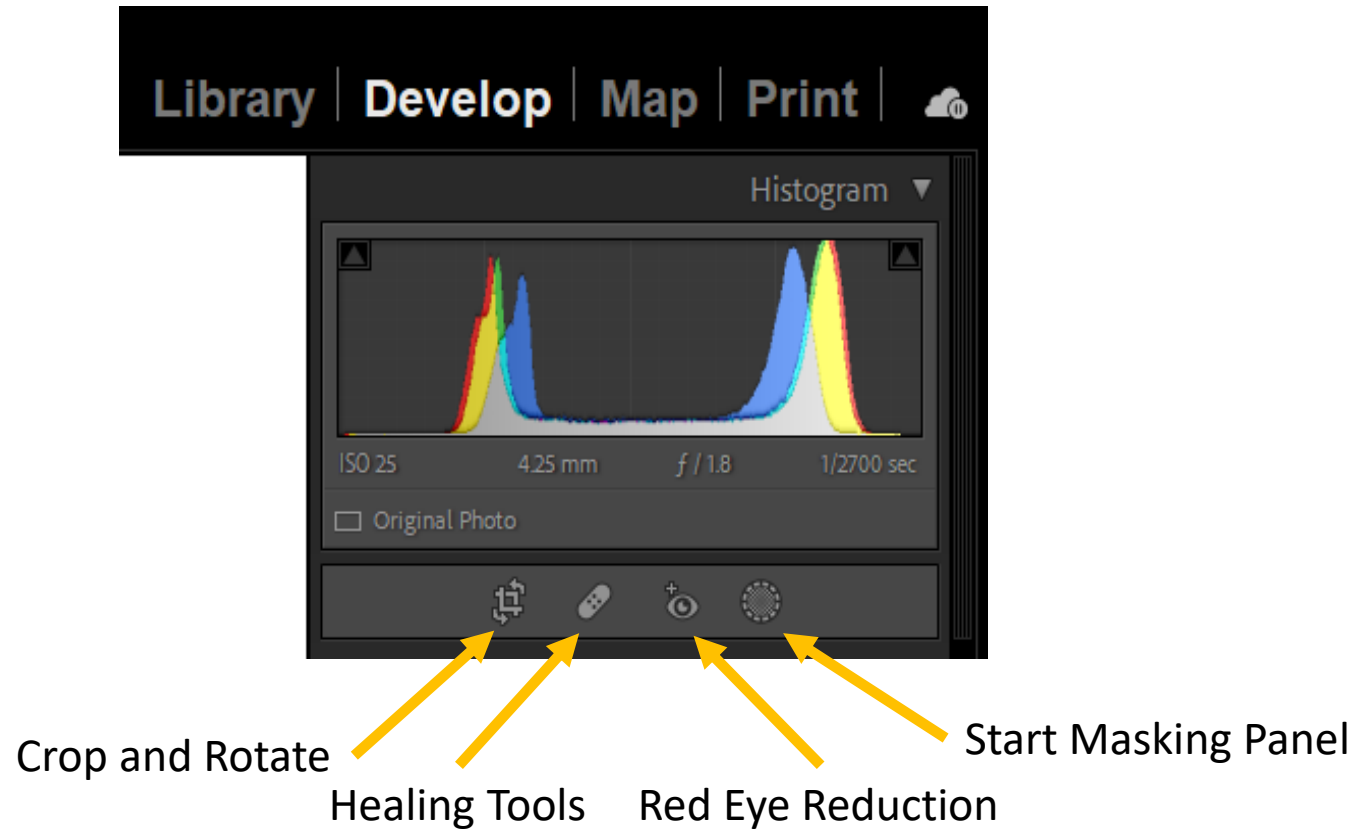
January 18 and 25, 2022

References

- Many YouTube demos
- Highly recommend

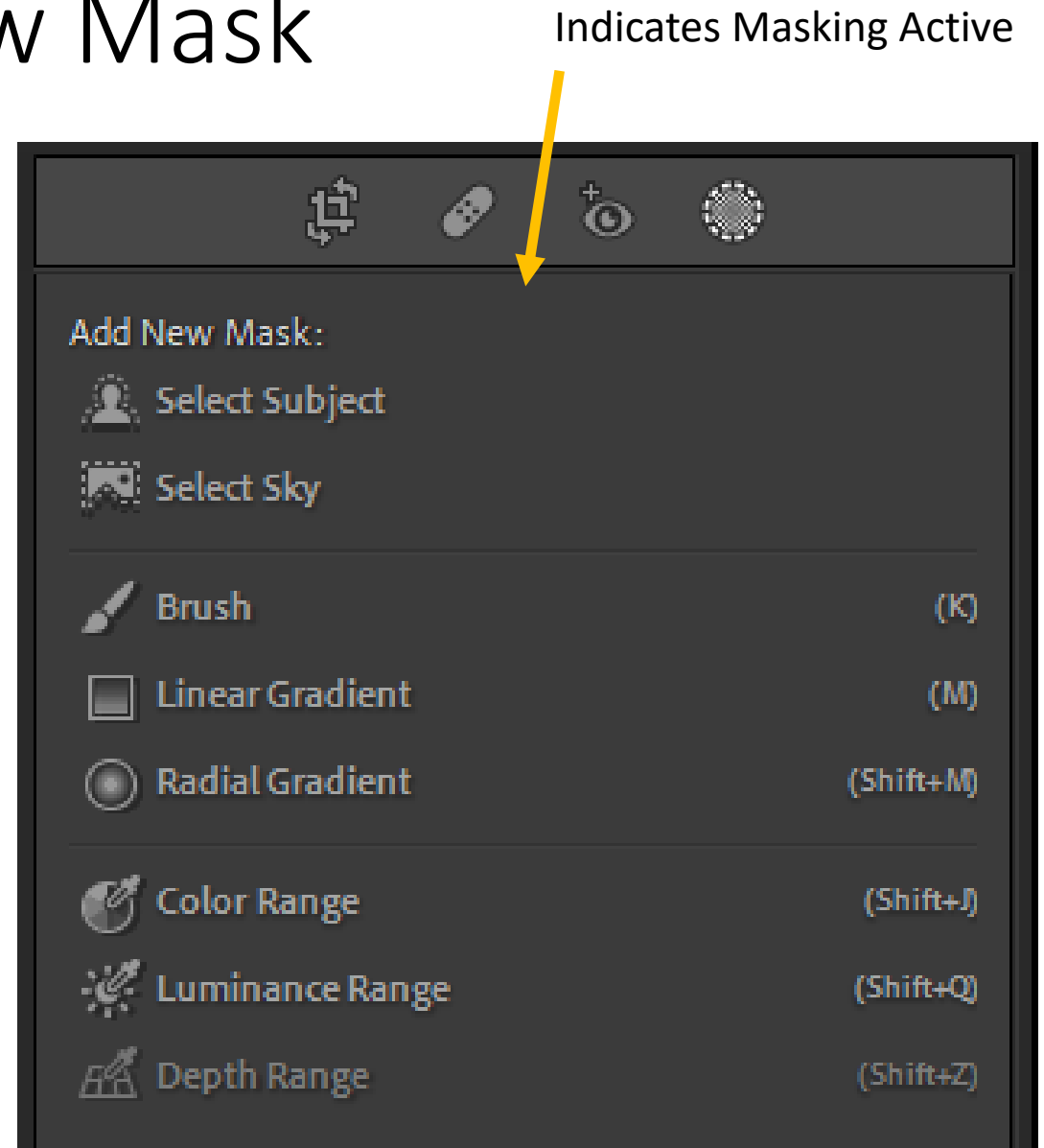
Michael Frye *Lightroom Masking Panel: In Depth*
<https://education.michaelfrye.com/lr-masking/>

A New Look

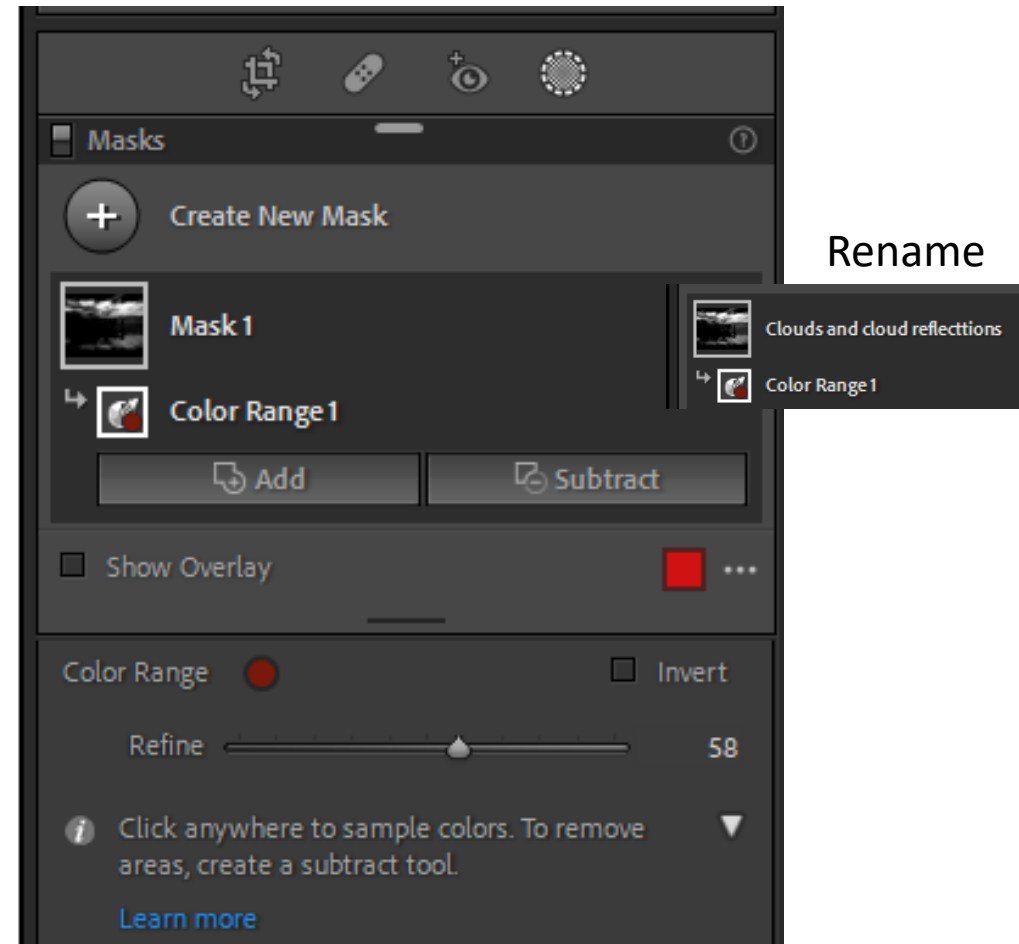


Masking Panel- Add New Mask

1. Activate Masking Panel
2. Choose a mask type
3. Select Subject and Sky are new
4. Brush, Linear and Radial gradients are as before
5. Color and Luminance range are now stand alone rather than modifiers
6. Masks can be combined with Add, Subtract, and Intersect and can be Inverted or Duplicated



- Once a mask is created, it shows up in the mask list
- You can rename the mask
- Most masks have modifiers
- New masks can be added to or subtracted from the initial mask
- A mask can be intersected with another mask. The intersection is the area where both masks are true. Hold down ALT (OPT on Mac) to turn Add/Subtract to Intersect



Demos

- Overview
- Individual Masks
- Combining Masks