



Fun with Photoshop

By: Heidi Phillips

Capturing what is, then creating what isn't.





My first inspiration

































Before you shoot it, you have to see it.

Point of View

Lighting

Elements to shoot

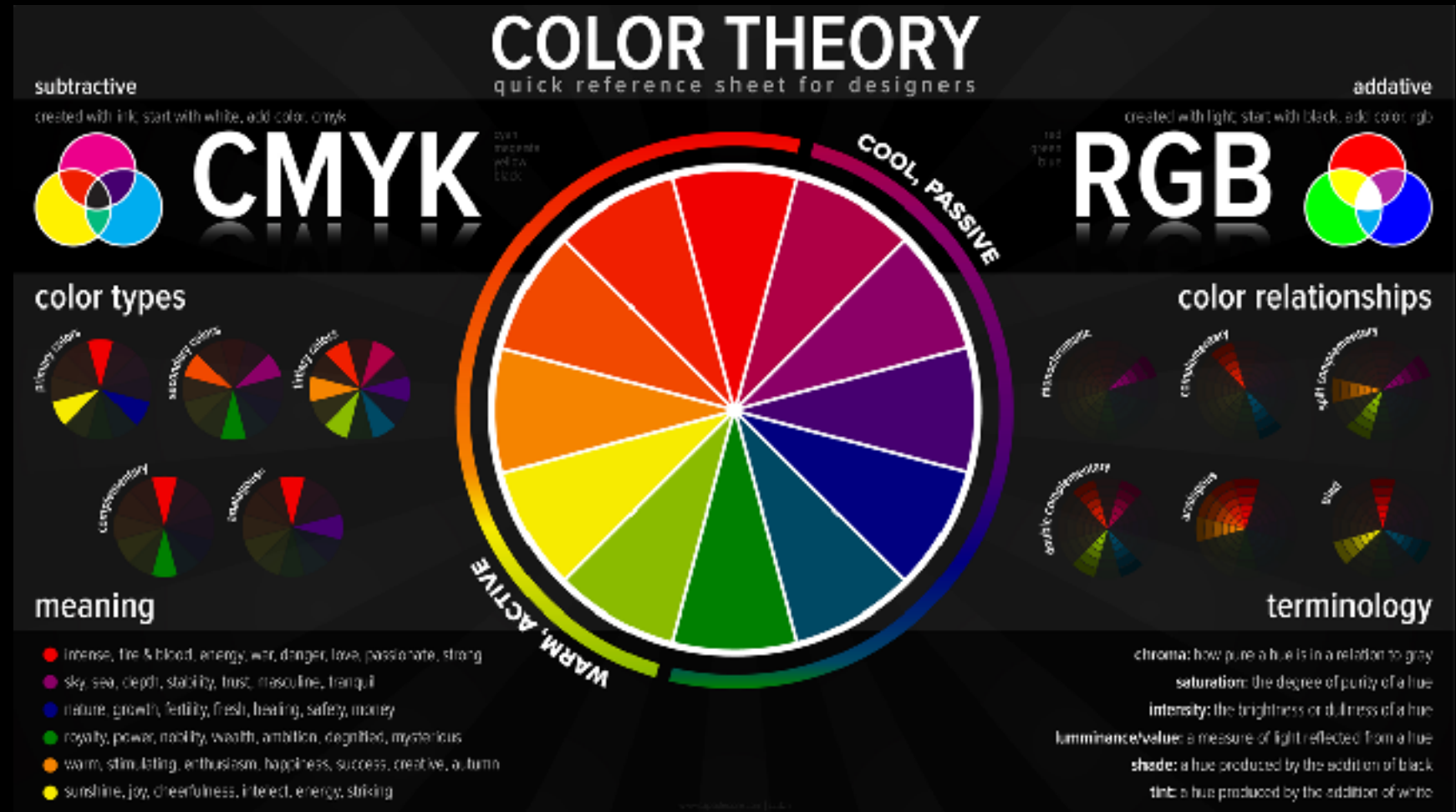
Color palette

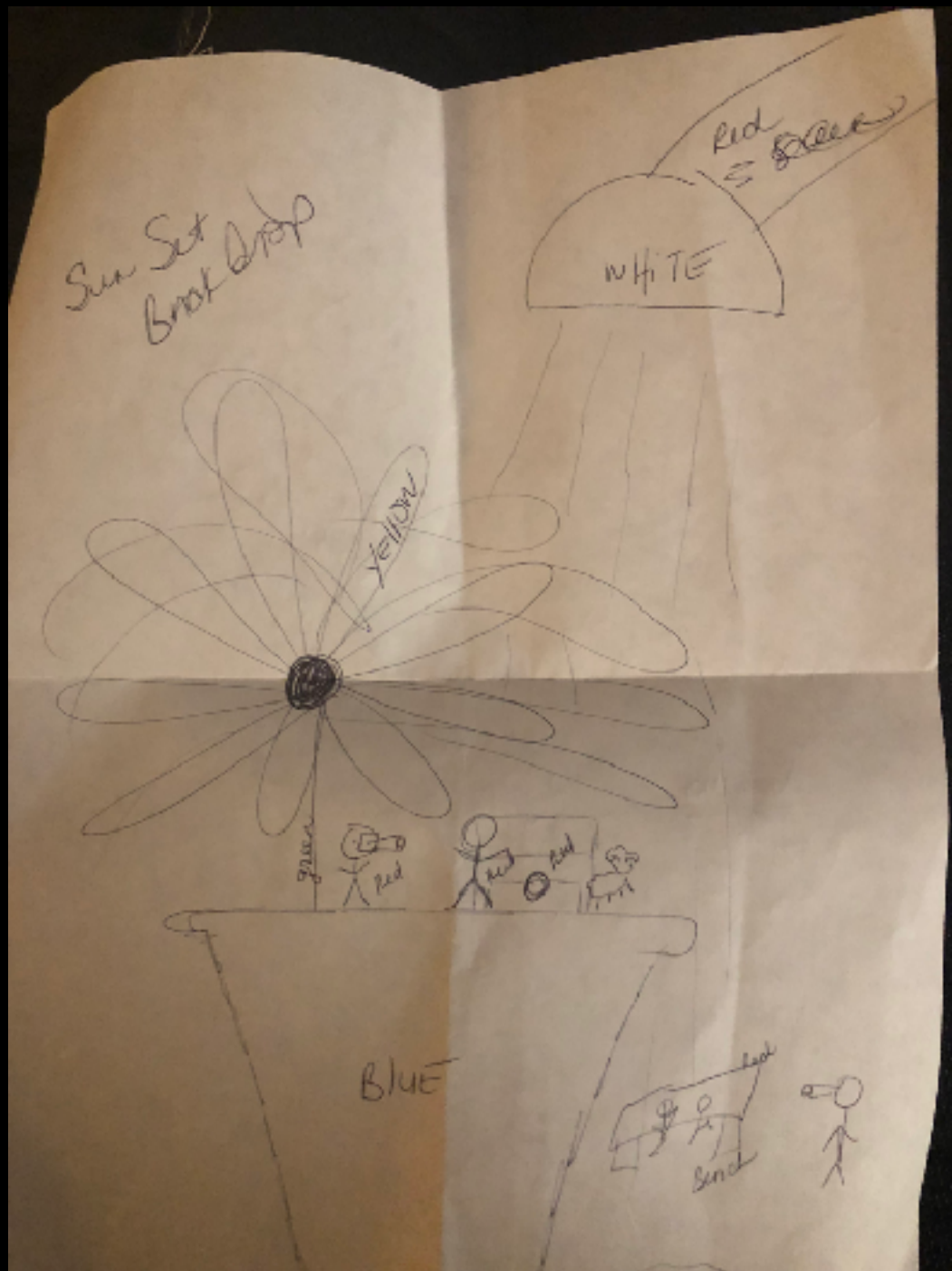
wardrobe

Accessories

Makeup

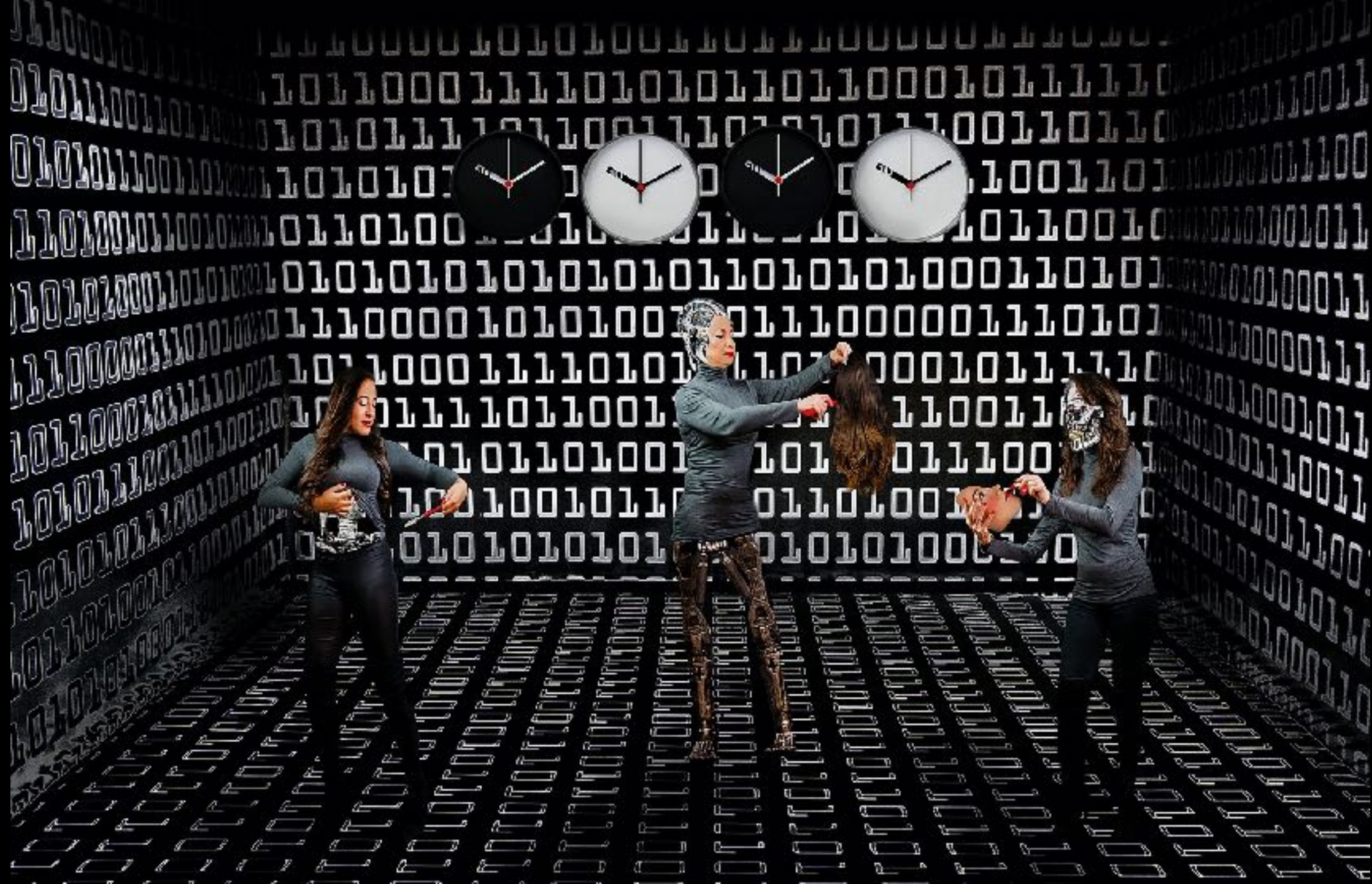
Draw it out
(even if you can't draw)





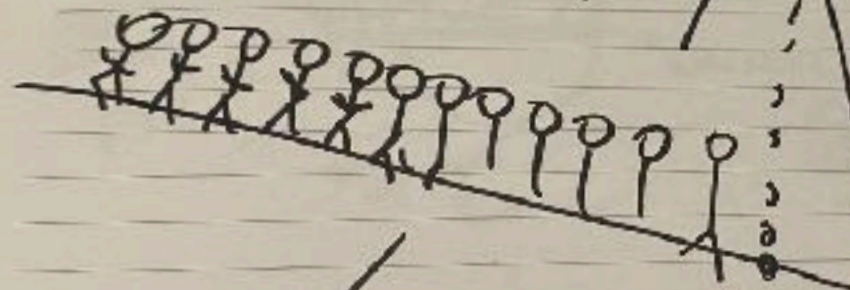








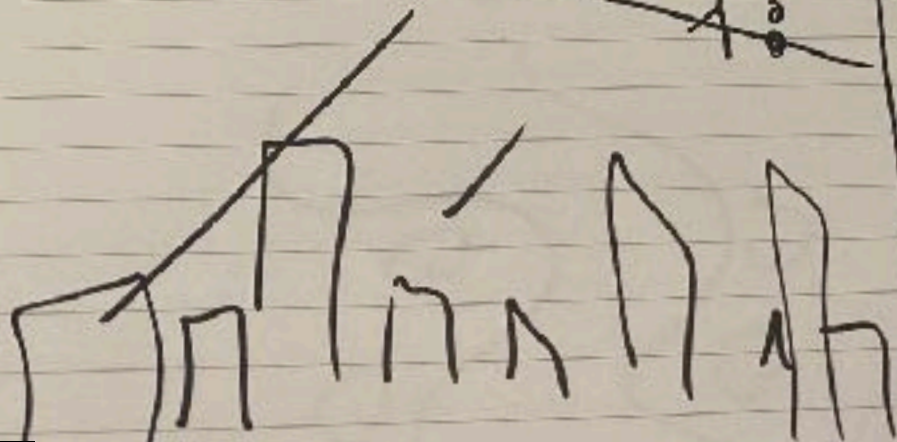
NEW YORK



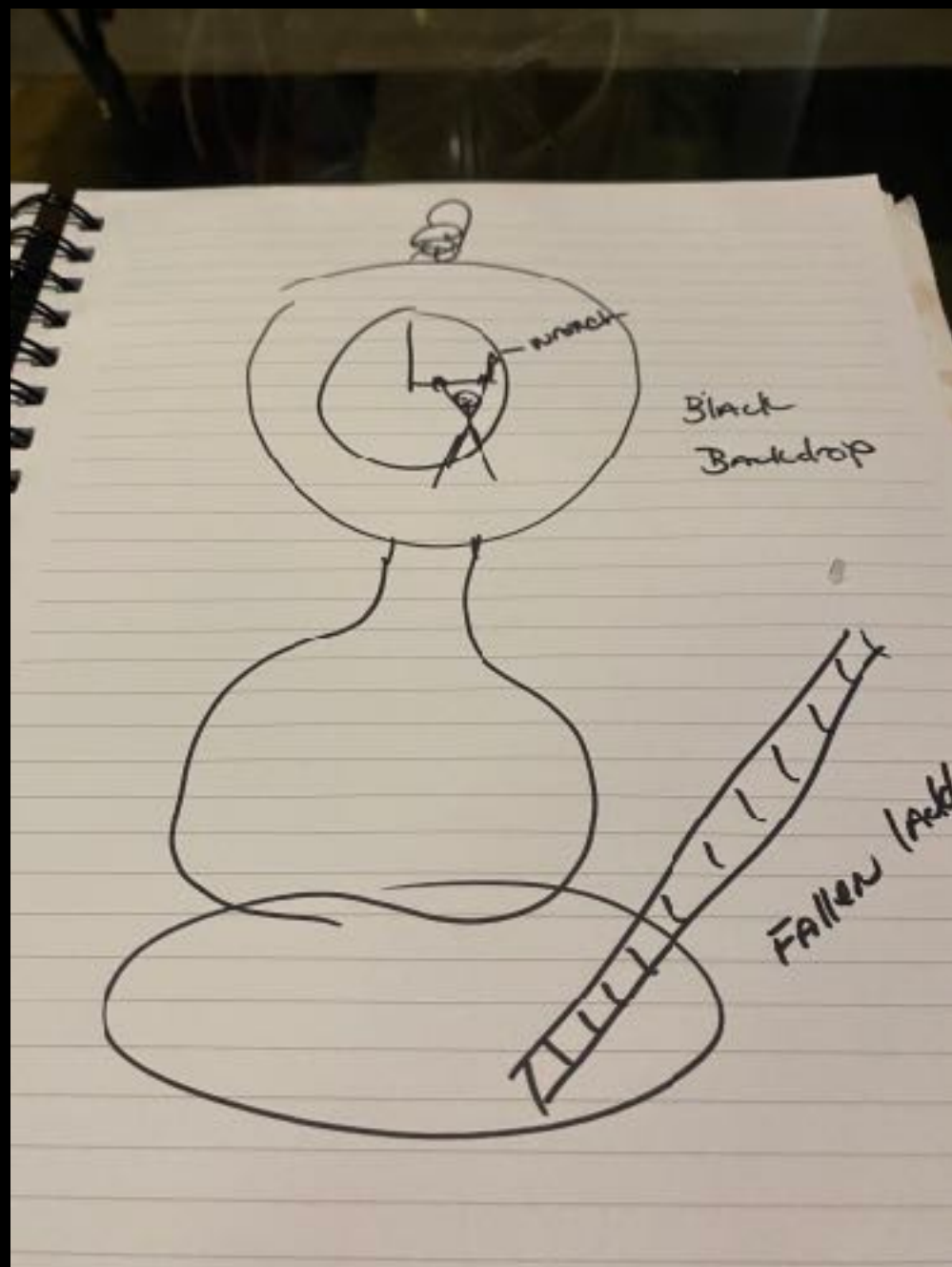
WOMEN
current text
El Paso
color?

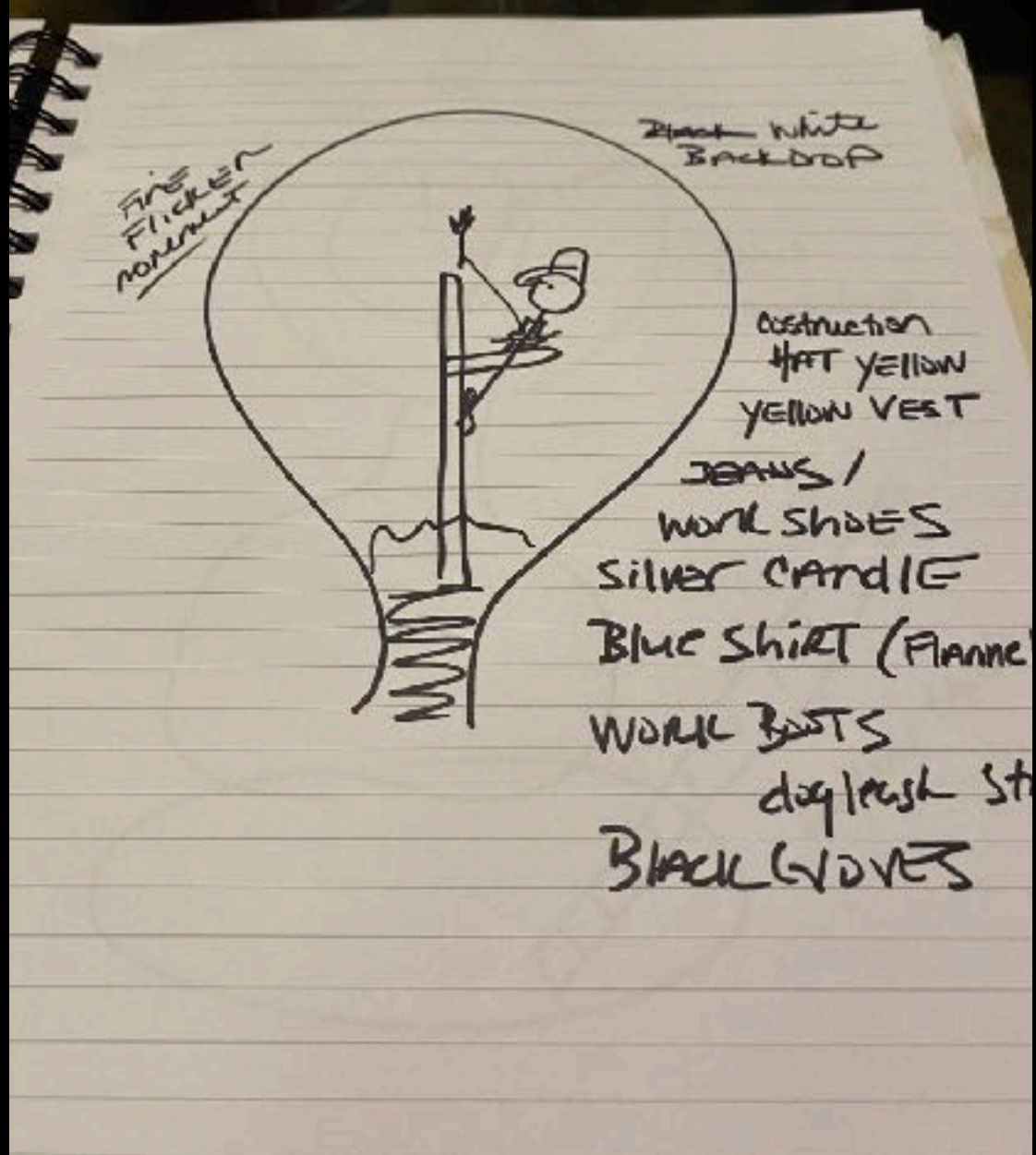
Chase -
Building Manager

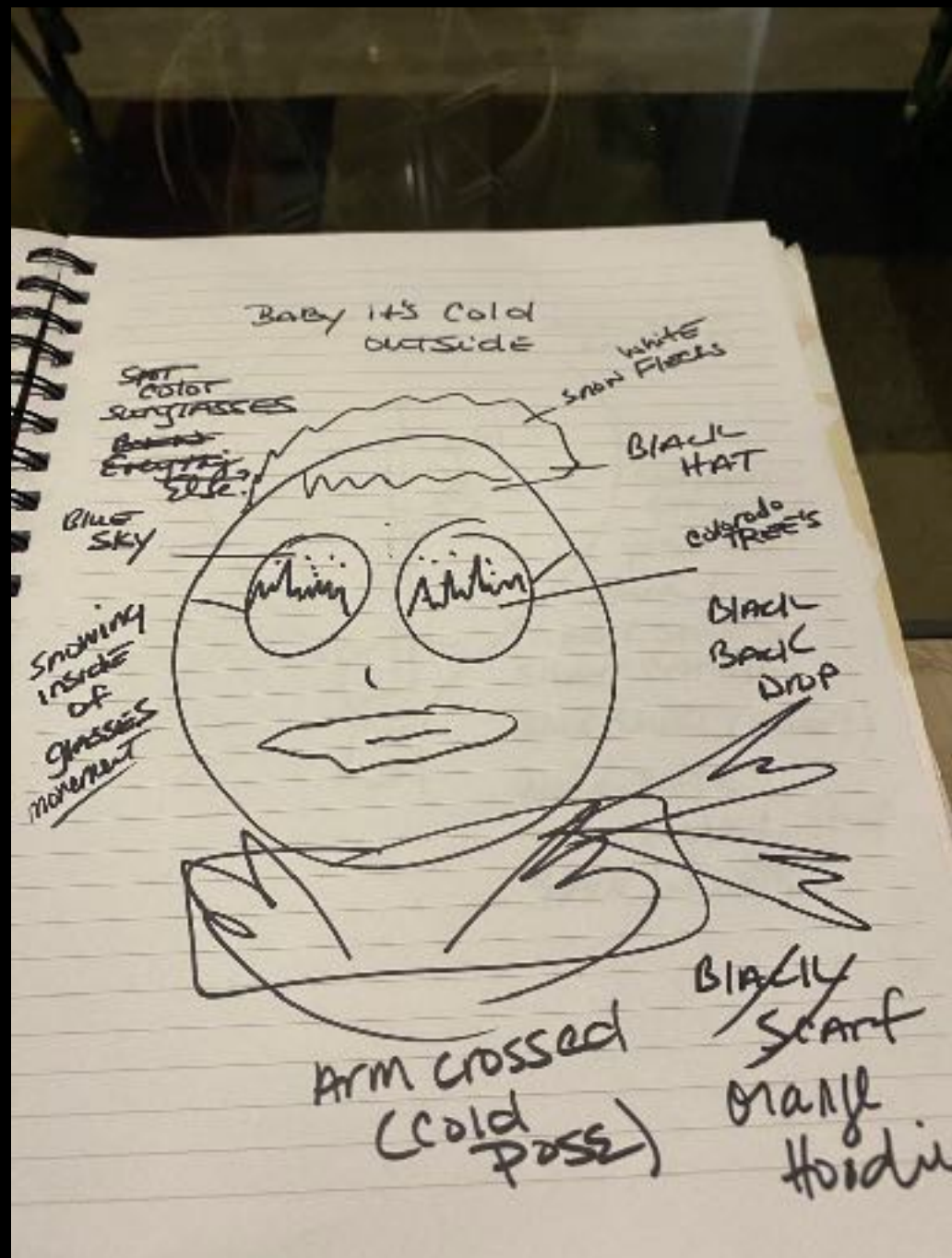
Carmen
533-4636

















Lightroom allows you to view and edit an entire series of photos.


Photoshop is meant for creating one piece of art at a time.

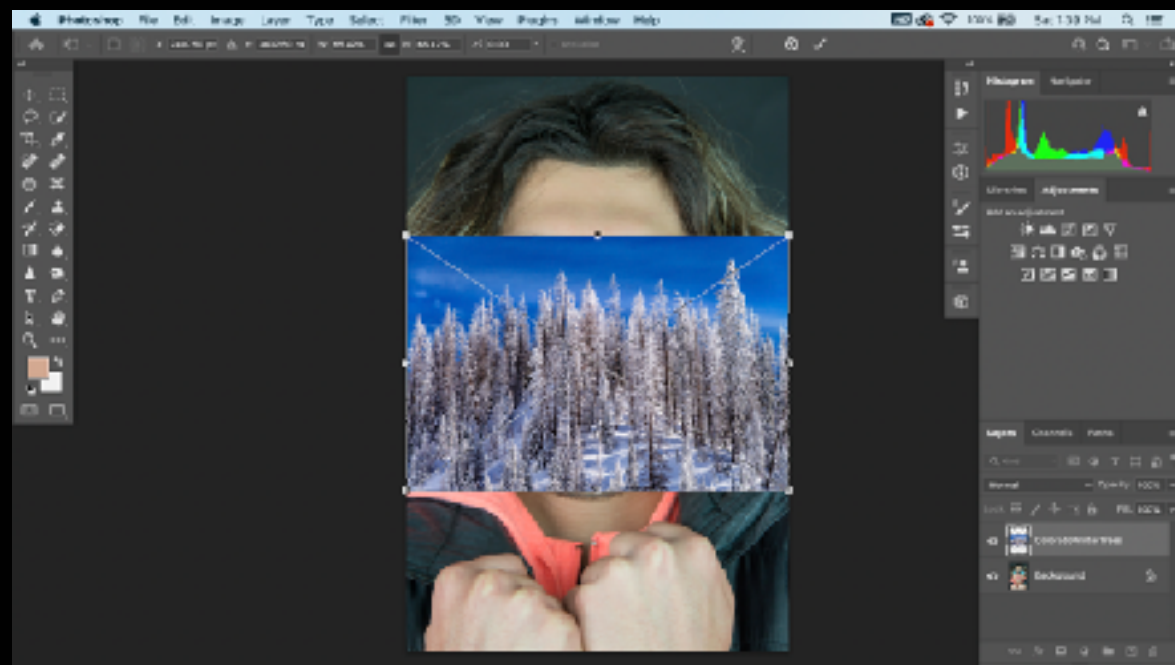
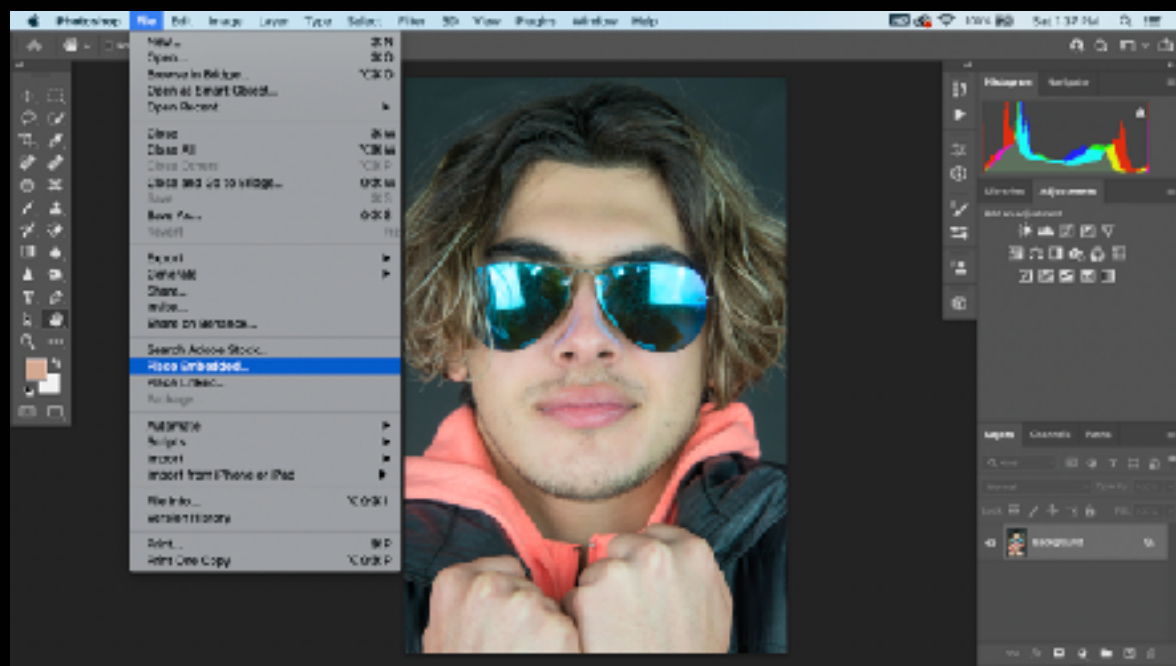
There are multiple ways to do everything in Photoshop.

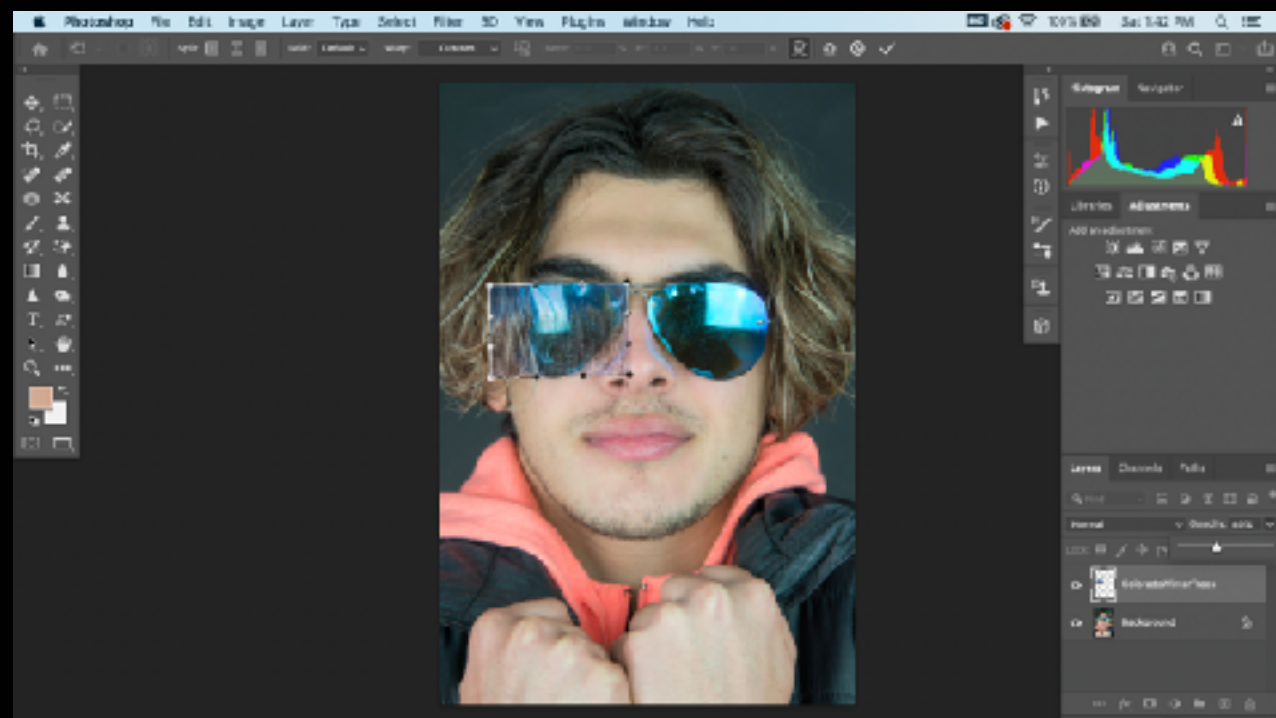
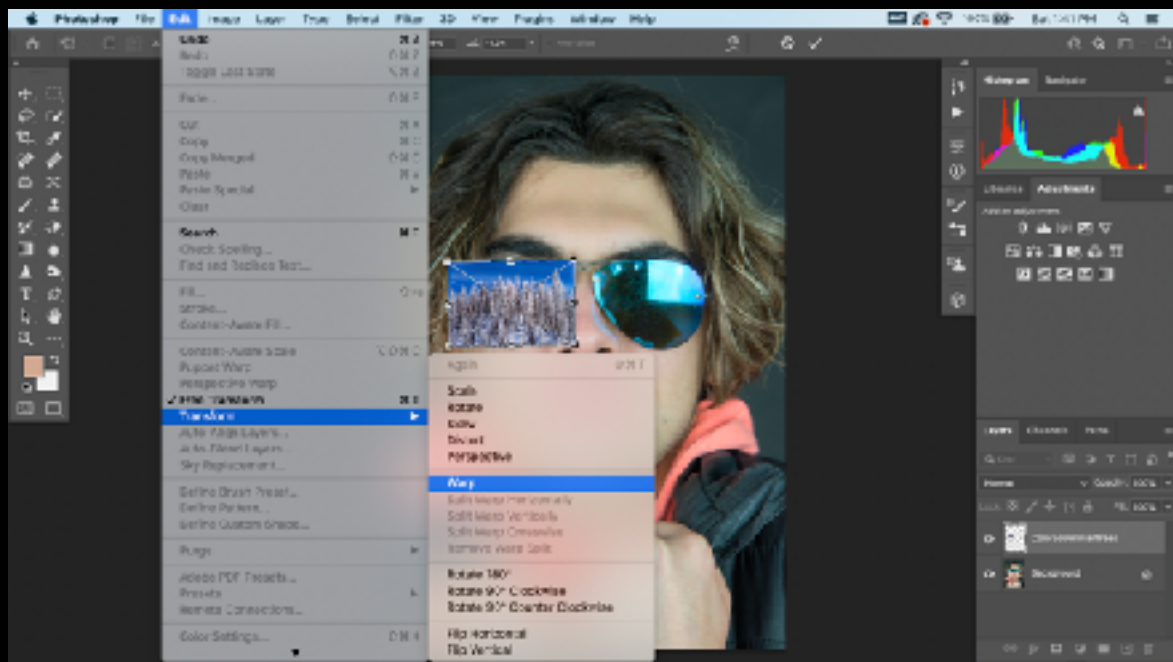
There are shortcuts for everything.

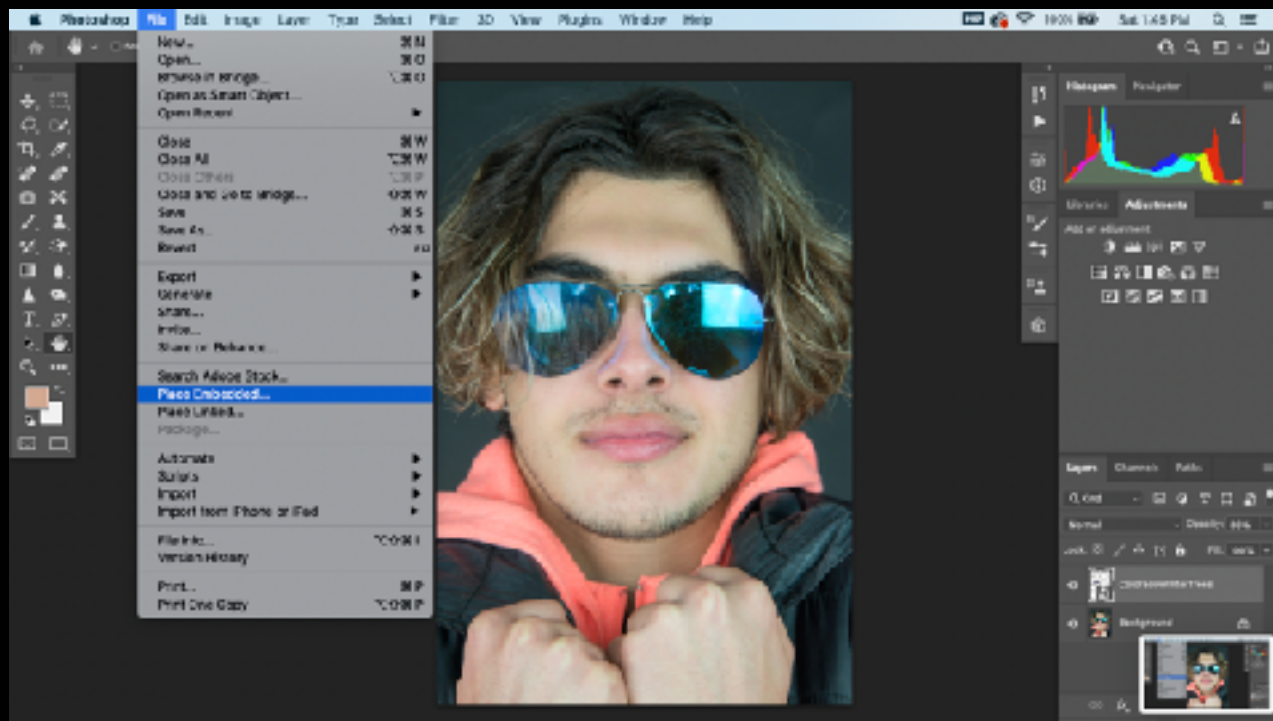
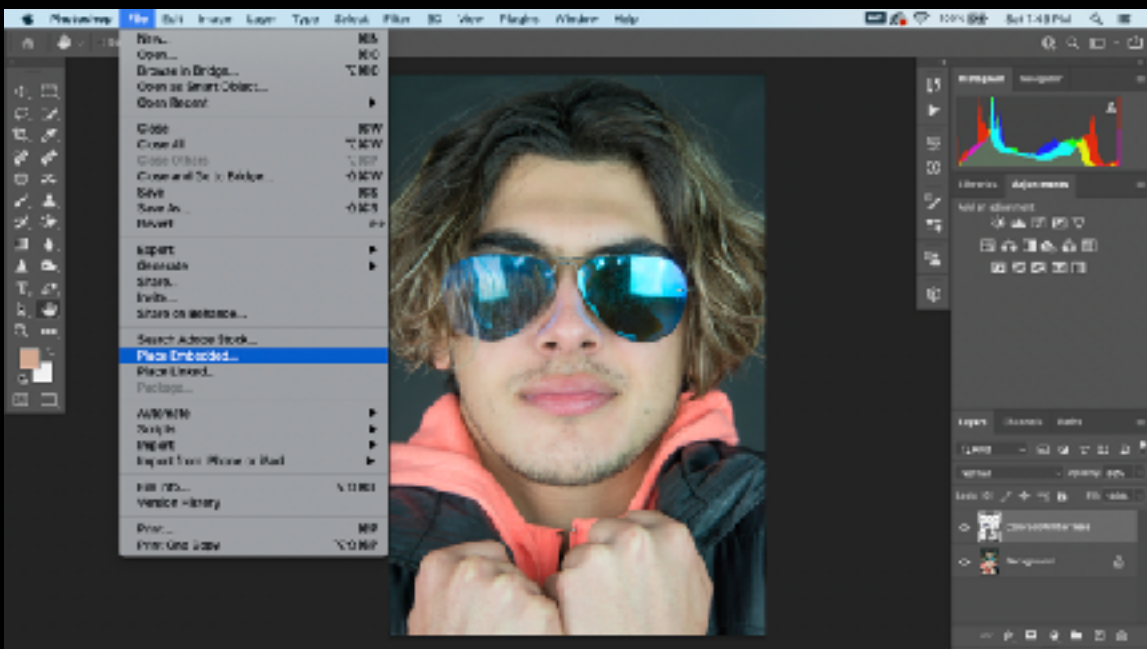
It has gotten much more user friendly in the last few years.

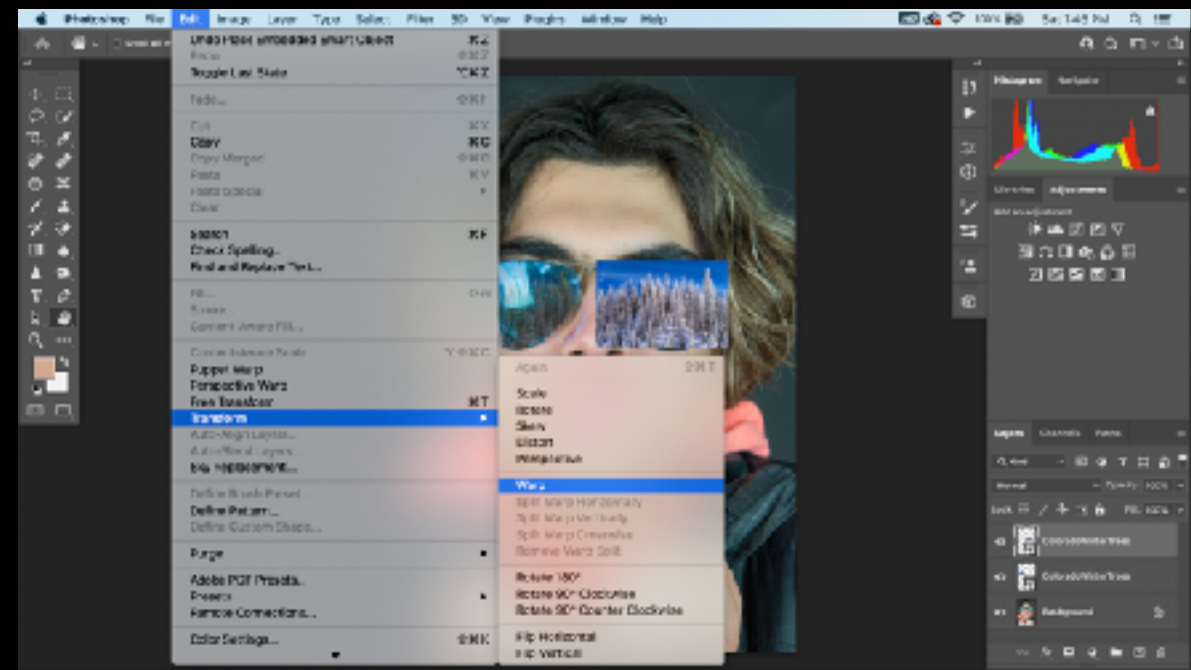
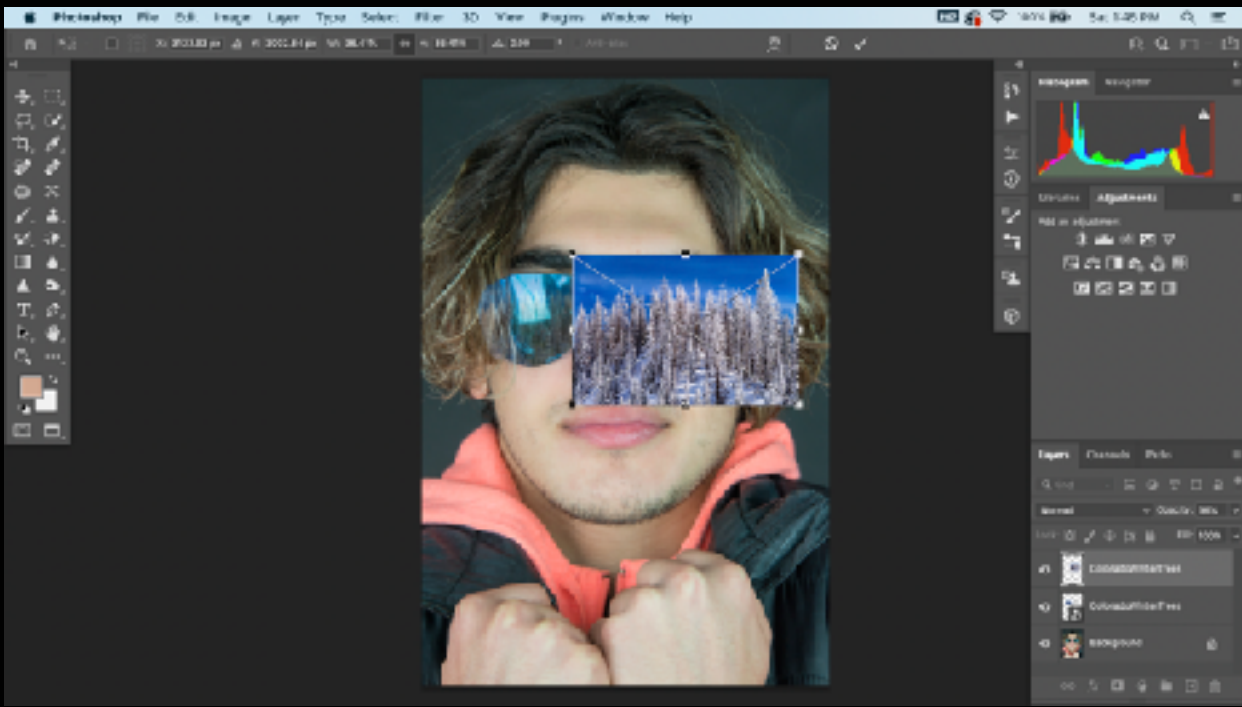
Tutorials are available in Photoshop.

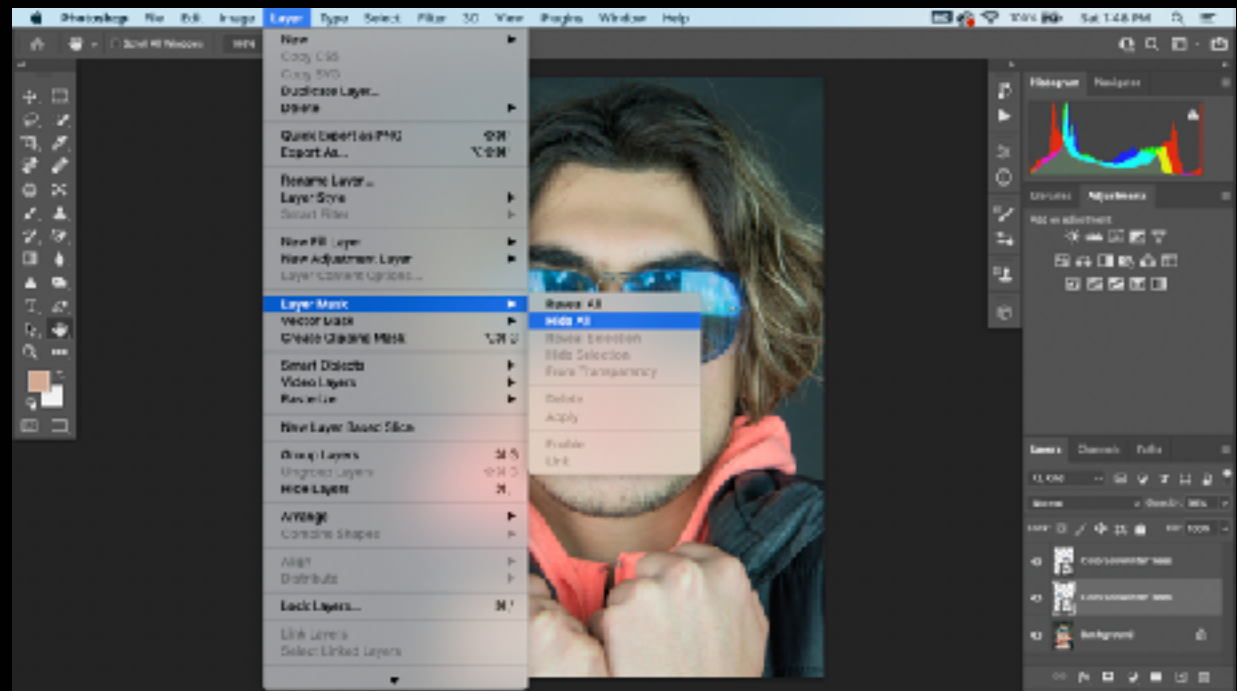
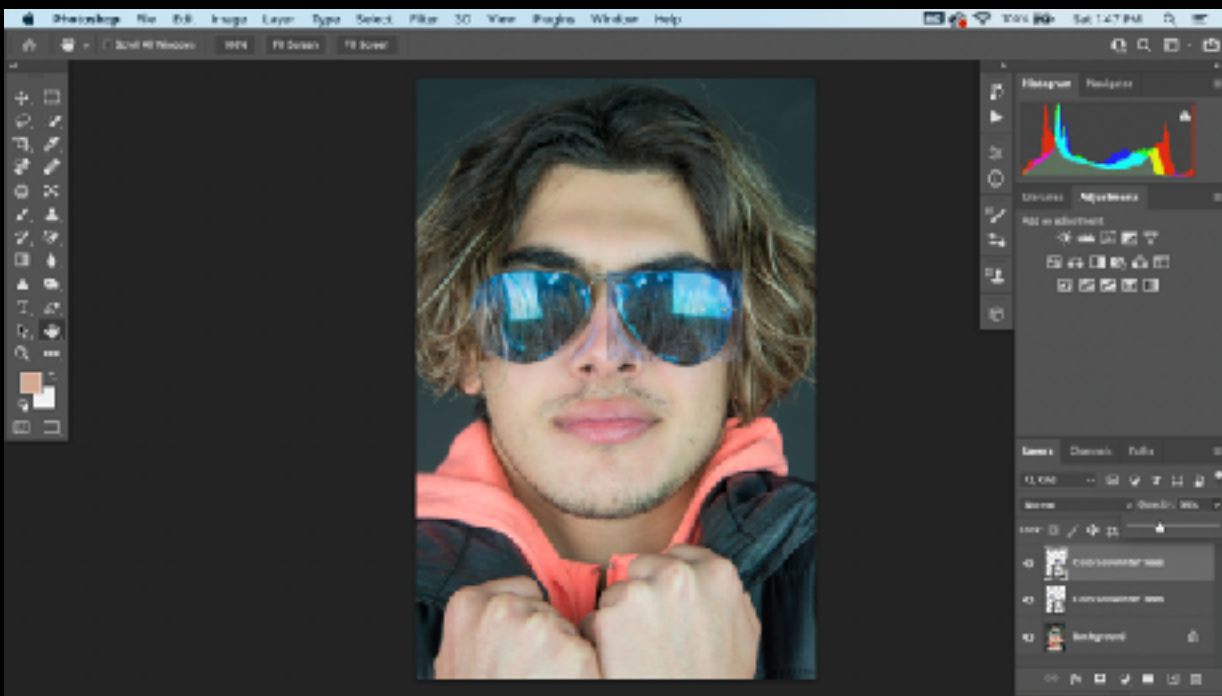
Photoshop® Keyboard Shortcuts		
Cheat Sheet		
		
Result	Mac	PC
Duplicate Current Layer	⌘ + J	Ctrl + J
Create a New Layer	Shift + ⌘ + N	Shift + Ctrl + N
Merge Layers	⌘ + E	Ctrl + E
Merge Visible Layers	Shift + ⌘ + E	Shift + Ctrl + E
Group Layers	⌘ + G	Ctrl + G
Levels Command	⌘ + L	Ctrl + L
Curves Command	⌘ + M	Ctrl + M
Fill Current with Foreground Color	Option + Delete	Alt + Backspace
Change Brush Size	[or]	[or]
Change Brush Hardness	Shift + [or]	Shift + [or]
Move Tool	V	V
Type Tool	T	T
Dodge Tool	O	O
Burn Tool	Shift + O	Shift + O
Brush Tool	B	B
Default Colors	D	D
Swap Foreground/Background	X	X
Layers Panel	F7	F7
Actions Panel	Option + F9	Alt + F9
Increase Font Size	Shift + ⌘ + >	Shift + Ctrl + >
Decrease Font Size	Shift + ⌘ + <	Shift + Ctrl + <
Image Size	⌘ + Option + I	Ctrl + Alt + I
Canvas Size	⌘ + Option + C	Ctrl + Alt + C
Zoom In	⌘ + =	Ctrl + =
Zoom Out	⌘ + -	Ctrl + -

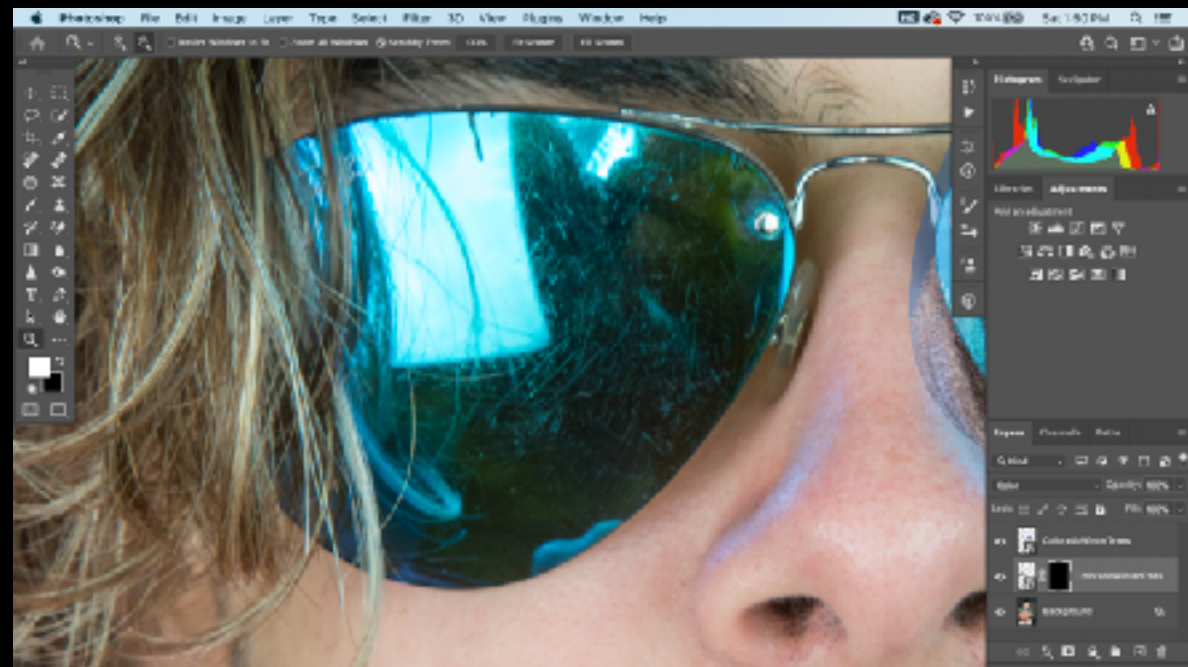
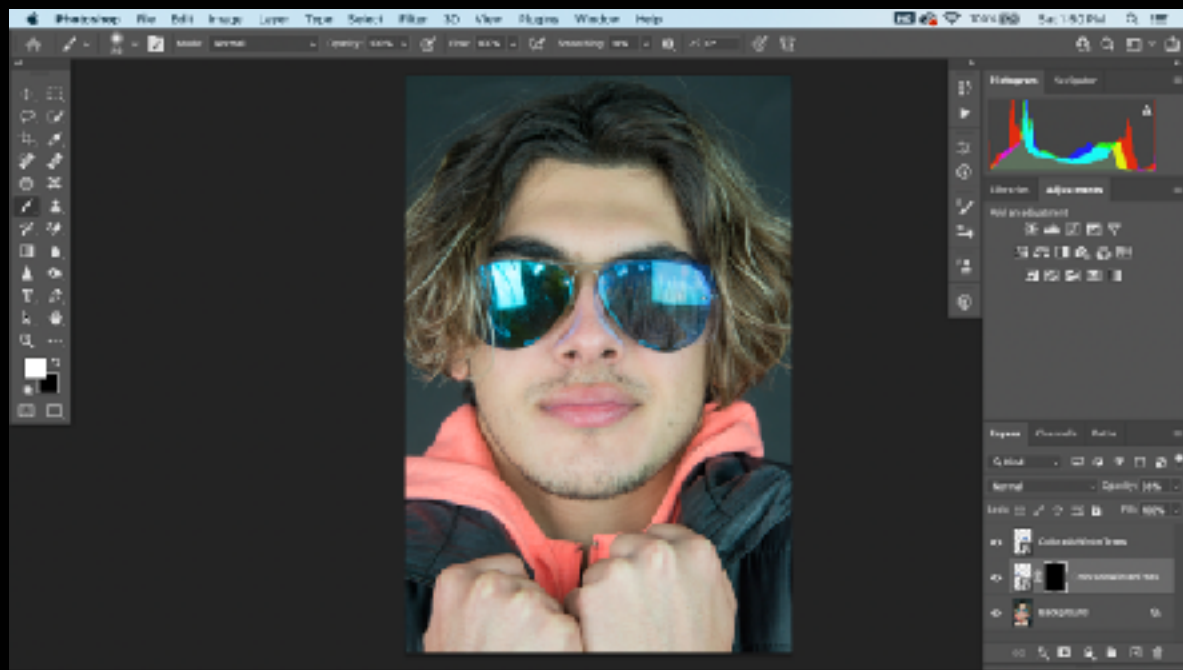


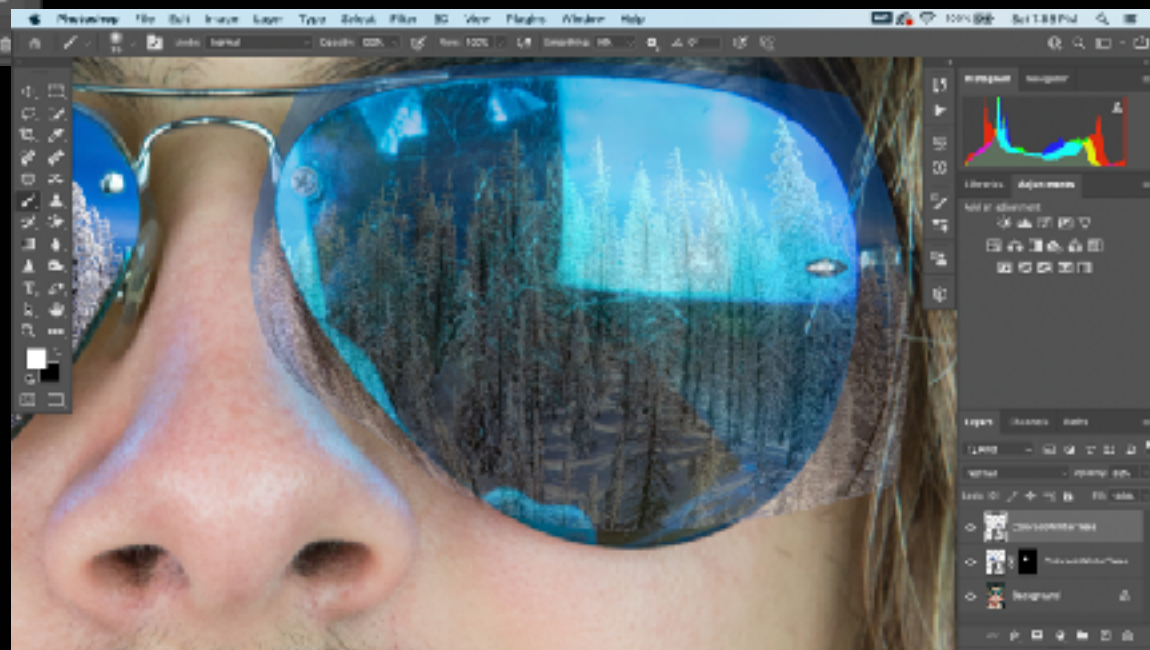


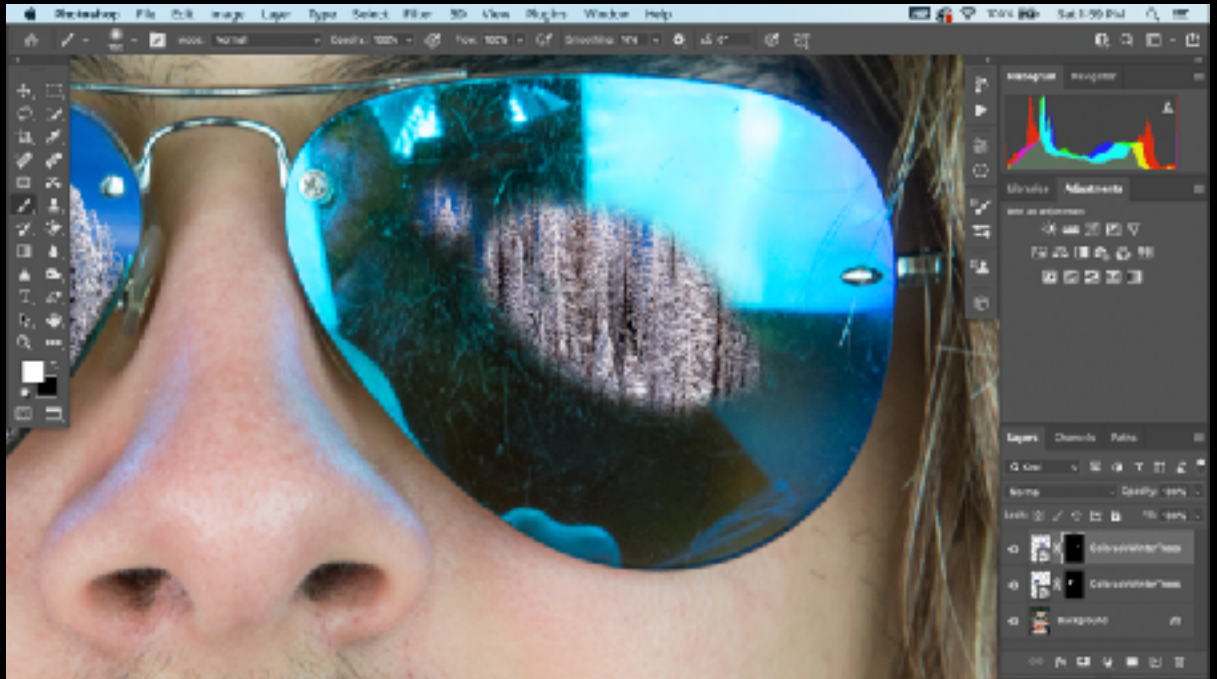
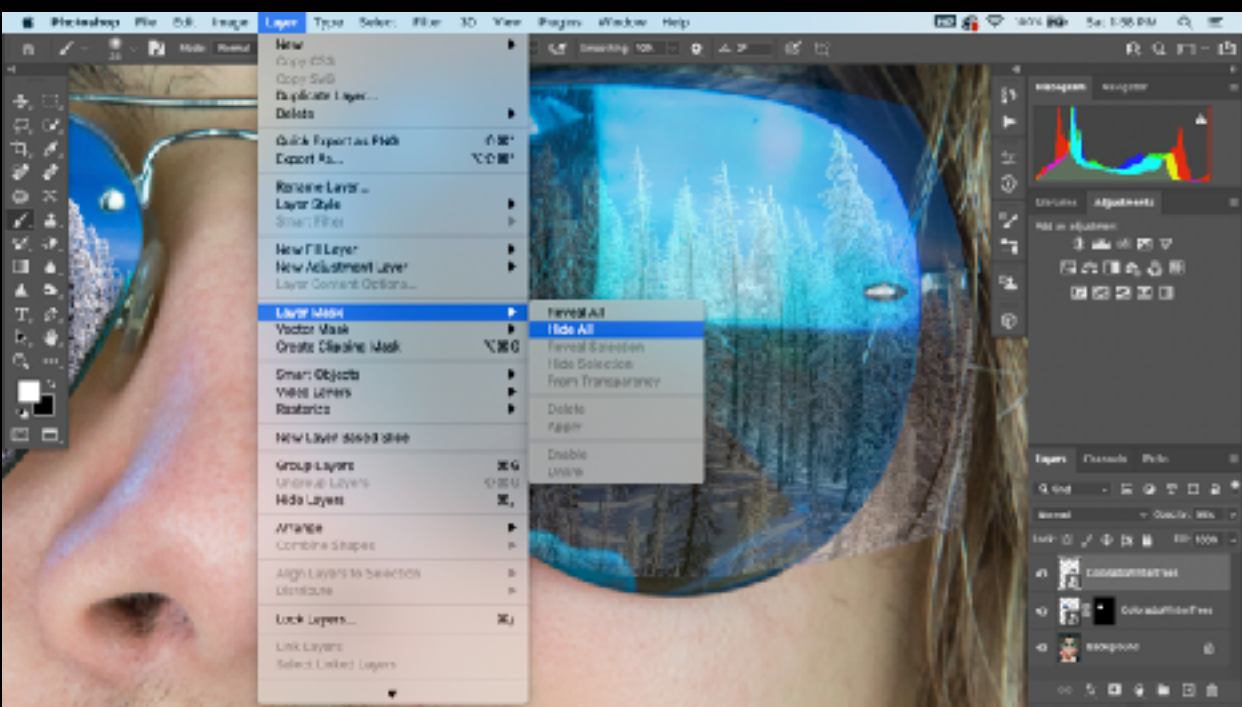




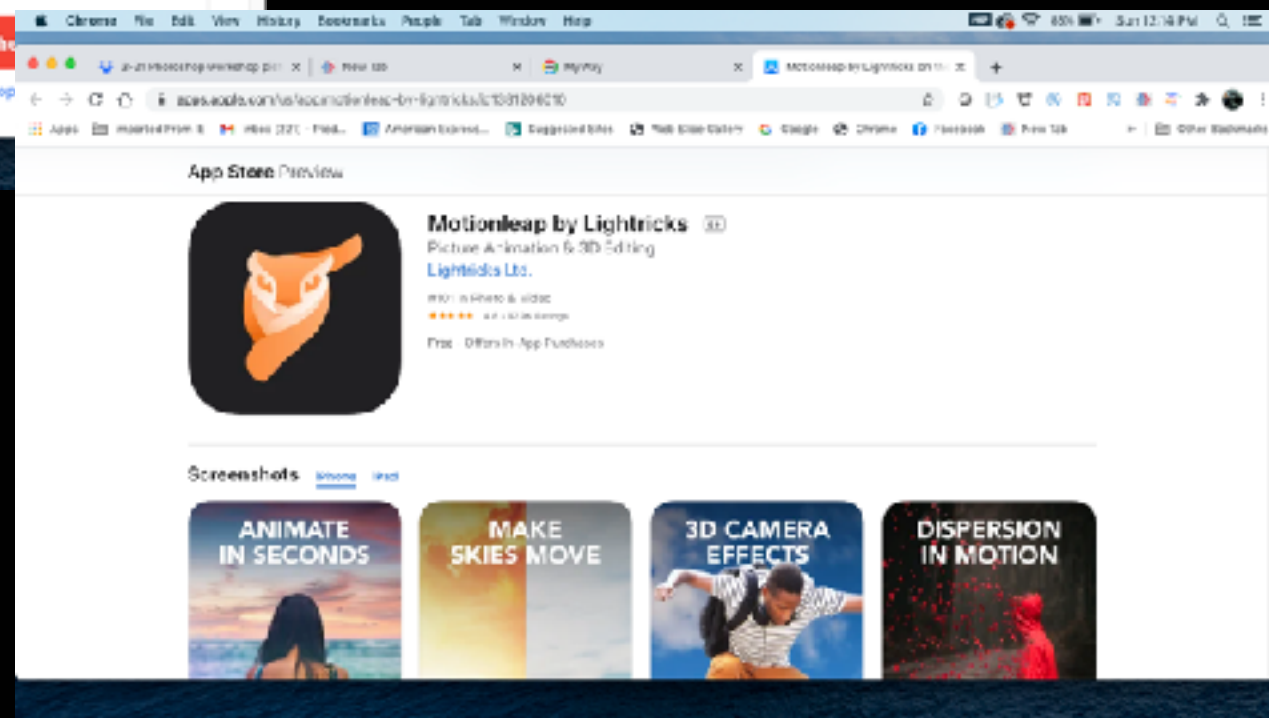
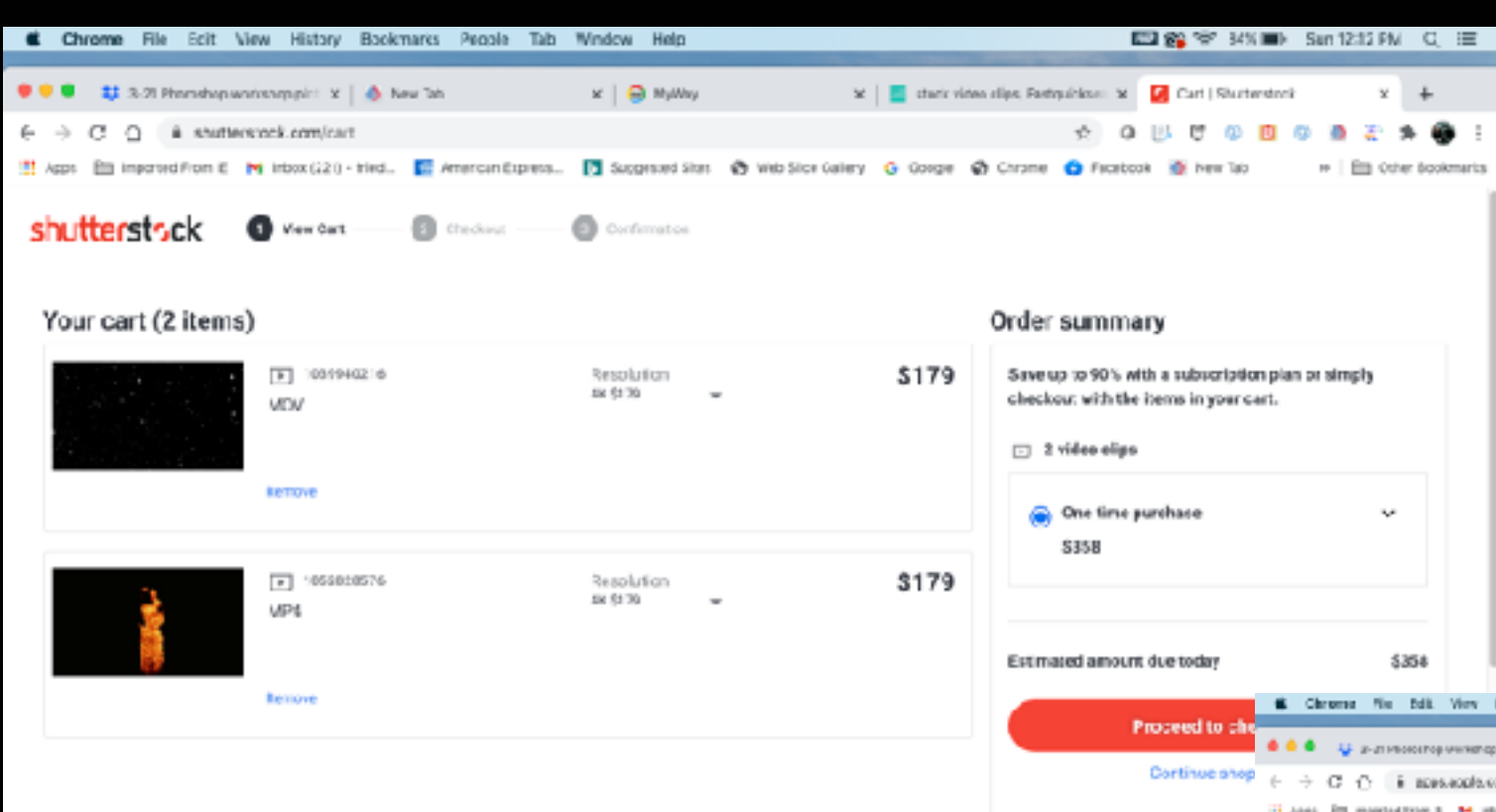












Making a Selection

Isolating part of an image so you can work on that area without affecting the rest of the image.





franklin



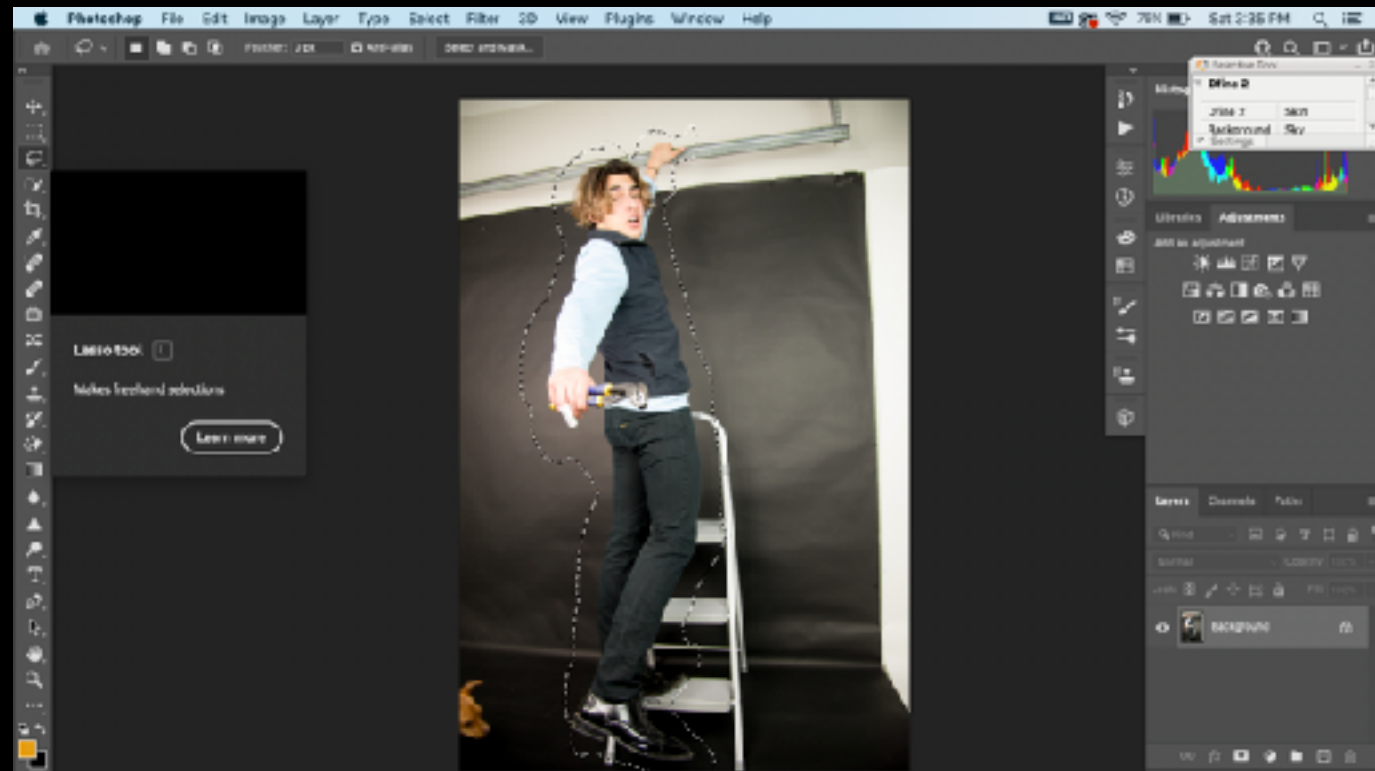


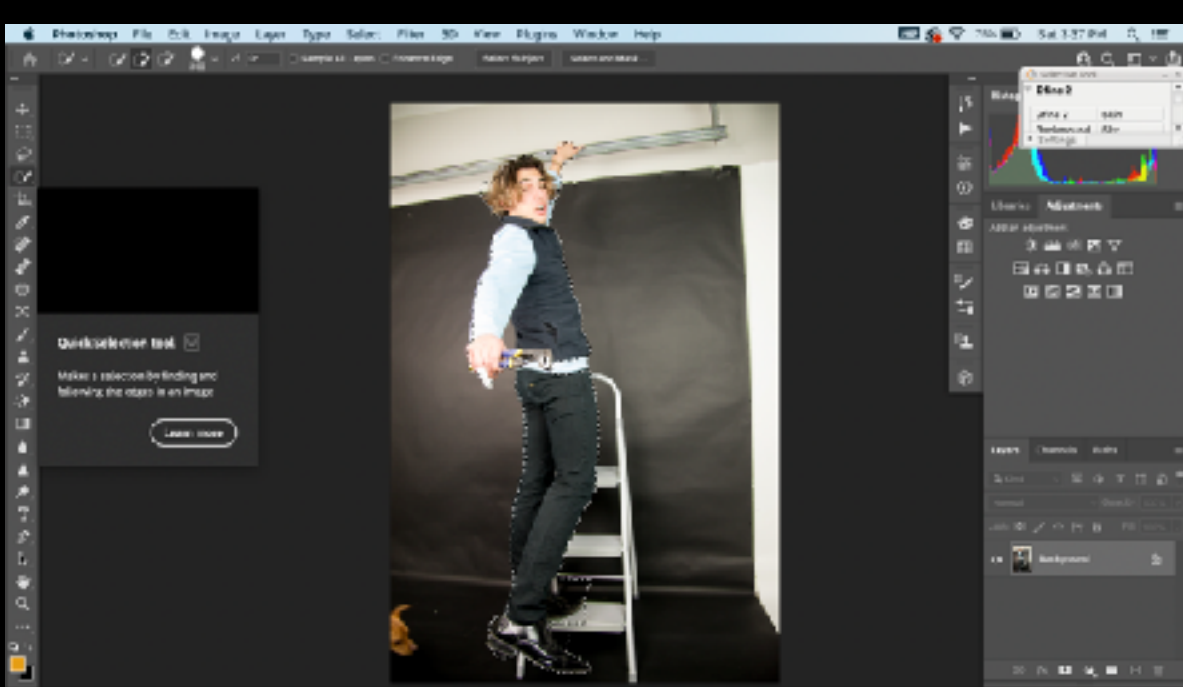


Rectangular Marquee Tool - Elliptical Marquee Tool

Select rectangles, or
ellipses. Squares, if you use
the shift key.

Lasso Tool - Polygonal, Magnetic
“Trace” a selection using magnetic help





Quick Selection Tool: -Magic Wand

“Paint” a selection using an adjustable round brush tip.

Drop Down Select Menu:

Color Range
Focus area
Select Subject
Sky

